

NORTH AMERICA SALON & SPA
DESIGN

PARAGON[®]

2014/2015

50

YEARS

Modern American Design



Los Angeles is Garfield's home and it's where we've been designing and manufacturing furniture for the past 56 years. This is our history. And right from the beginning, our ambition has always been to create furnishings and equipment that not only look good, but are functional and of great value for your money, too. We do this by always thinking smarter and being more efficient. To this day, we still produce our products in Los Angeles, as well as other parts of the world. We work closely with our production teams to ensure that our heritage and years of experience are carried through in everything that we do.

We have come a long way since 1958. The world has changed dramatically since then, but some things remain the same. Like our customer's basic need for functionality and comfort combined with beauty, simplicity, and price. That certainly hasn't changed and probably never will. And we stay true to our great heritage and affirm our commitment to creating good, honest, and practical designs. It is a commitment that all our professional distributors share, and we take pride in offering you highly professional service through our experience.

Please enjoy our new catalog and portfolio of products. Turn the pages to find new inspirations, explore a world of options, and know that our more than 50 years of experience have been put to good use, so you can enjoy the best of modern American design.



seating

- 46 salon chairs
- 38 barber chairs
- 44 all-purpose chairs
- 42 make-up chairs
- 76 dryer chairs
- 74 shampoo chairs
- 95 children's chairs
- 64 hydraulic and electric bases

shampoo

- 66 UPC shampoo systems
- 72 UPC shampoo sinks
- 74 shampoo chairs
- 73 UPC faucets and fixtures

dryers & processors

- 80 UL listed boxed dryer
- 82 downward draft dryers
- 84 steam processors
- 88 advanced infrared processors

electronics

- 10 facial vaporizers
- 12 magnifying lamps
- 6 multiple-function systems
- 5 rotary brush
- 5 high frequency
- 5 vacuum and spray
- 5 galvanic
- 21 microdermabrasion
- 16 towel warmers and sanitizers
- 18 skin analyzers

spa treatment tables

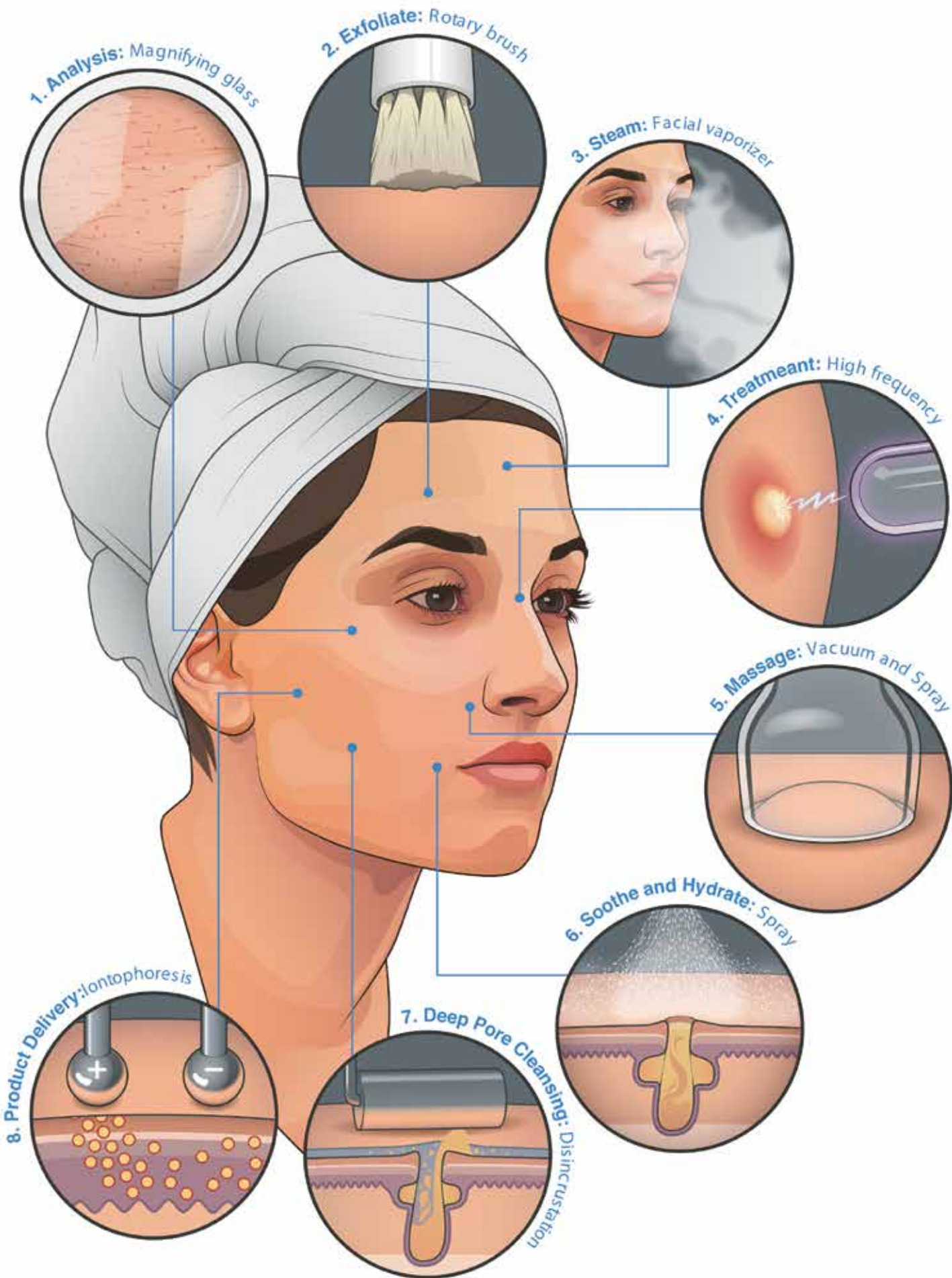
- 24 eAssist electric tables
- 36 standard tables

utility carts

- 22 facial carts
- 23 stainless steel carts
- 96 hair carts

facts

- 100 initiatives for life
- 101 good to know
- 102 terms & conditions
- 103 fabric color chart



SINGLE FUNCTION

PARAGON® SIGNATURE SYSTEMS

ROTARY BRUSH

MODEL No. 202

The rotary brush system is used when sloughing dead skin cells and removing impurities that cling to the skin's outermost surface. The brush spins clockwise and counterclockwise with variable speeds. The automatic shut-off system will engage when the brush attachment is used with excessive force. Preassembled handle and a complete set of 6 easy natural bristle push-on brush attachments are included.



HIGH FREQUENCY

MODEL No. 203

The high-frequency system generates a warm thermal current that stimulates and aids in sterilization. Argon-violet electrodes are available and must be requested at the time of purchase. Includes preassembled handle and a set of 4 neon-orange electrodes: straight, pointer, spoon, and mushroom. Rake and comb electrodes are available for purchase.



VACUUM & SPRAY

MODEL No. 204

The vacuum and spray remove embedded dirt, sebum, and other impurities while providing a deep penetrating massage. The spray applies a refreshing mist of water or toner after the vacuum treatment. A complete set of 6 glass suction cup attachments and 2 atomizers are included.



GALVANIC

MODEL NO. 205

The galvanic generates a low-level galvanic current or direct current that is used for disincrustation and iontophoresis. Disincrustation facilitates deep pore cleansing by a chemical process known as saponification. Iontophoresis introduces water-soluble products deep into the skin. Polarity can be changed simply by the flip of a switch, and a rheostat knob allows for intensity control. Includes preassembled handle, 3 attachments, ground, disc, contact pouch, and bracelet.





8000

PARAGON® SIGNATURE MULTIFUNCTION SYSTEM, MODULAR

The legendary **PARAGON® 8000 SIGNATURE SKINCARE SYSTEM** is the most sought-after professional system. It is the only system still hand-built in America, so you know that all parts and service will still be here long after your initial purchase. Featuring the four essential aesthetic functions, the 8000 is modular and customizable to the aesthetician's needs. The 8000's modular design allows you to adapt and increase functions as your business and service menu grow. In addition, each function can be removed and serviced separately.

Each 8000 system includes our premium P1 Facial Vaporizer and 160 Magnifying Lamp. In addition to the vaporizer and magnifying lamp, choose all four essential features or choose from the following essential functions: rotary brush, high frequency, vacuum & spray, and/or galvanic (disincrustation and iontophoresis). Made in U.S.A.

Choose the number of functions that best fits your budget and service menu:

- | | |
|---|--------------|
| Magnifying Lamp + Facial Vaporizer + All 4 functions | 8000 |
| Magnifying Lamp + Facial Vaporizer + Choose 3 modular functions | 8000A |
| Magnifying Lamp + Facial Vaporizer + Choose 2 modular functions | 8000B |
| Magnifying Lamp + Facial Vaporizer + Choose 1 modular function | 8000C |

SIGNATURE SYSTEMS

PARAGON® PROFESSIONAL SIGNATURE SYSTEMS



ADVICE FROM INDUSTRY PROFESSIONALS

When purchasing a multifunction facial system, think beyond the initial purchase price. This is a big-ticket item, so before making the plunge, research the manufacturer's reputation and how the products are supported by replacement parts and service after your purchase. Make sure that the manufacturer has a factory service center and maintains a parts inventory to help you maintain your facial system in the future.



7000

PARAGON® SIGNATURE MULTIFUNCTION SYSTEM, ALL-IN-ONE

Not to be outshined, the **PARAGON® 7000 SIGNATURE SKINCARE SYSTEM** is one of the most dependable systems available on the market today. Conveniently packaged in a single unit, the 7000 features the same four essential aesthetic functions as the 8000, but with one more trick up its sleeve: the model F1 wood's lamp. Each system arrives complete with our premium P1 Facial Vaporizer and 186 Magnifying Lamp. In addition to the vaporizer, magnifying lamp, and wood's lamp, the model 7000 also includes the following essential functions: rotary brush, high frequency, vacuum, spray, and galvanic.

SIGNATURE SYSTEMS

PARAGON® PROFESSIONAL SKINCARE SYSTEM



2000

PARAGON® SIGNATURE SKINCARE SYSTEM, TABLETOP

The **PARAGON® 2000 SIGNATURE SKINCARE SYSTEM'S** innovative compact design is space-efficient while delivering professional-grade results. Ideal for small work surfaces and carts, the model 2000 features five essential functions in one integrated unit: rotary brush, high-frequency, vacuum, spray, and galvanic (disincrustation and iontophoresis). Made in U.S.A.



303T

PARAGON® SIGNATURE SKINCARE SYSTEM, MOBILE

The **PARAGON® 303T SIGNATURE SKINCARE SYSTEM** is the ideal setup for growing businesses transitioning into more rooms and may already operate vaporizers and mag lamps. Choose 3 facial functions to mount on a mobile facial cart. Cart features a UL Listed power strip, 3 sliding drawers, and a front instrument tray. Made in U.S.A.

CHOOSING THE RIGHT VAPORIZER

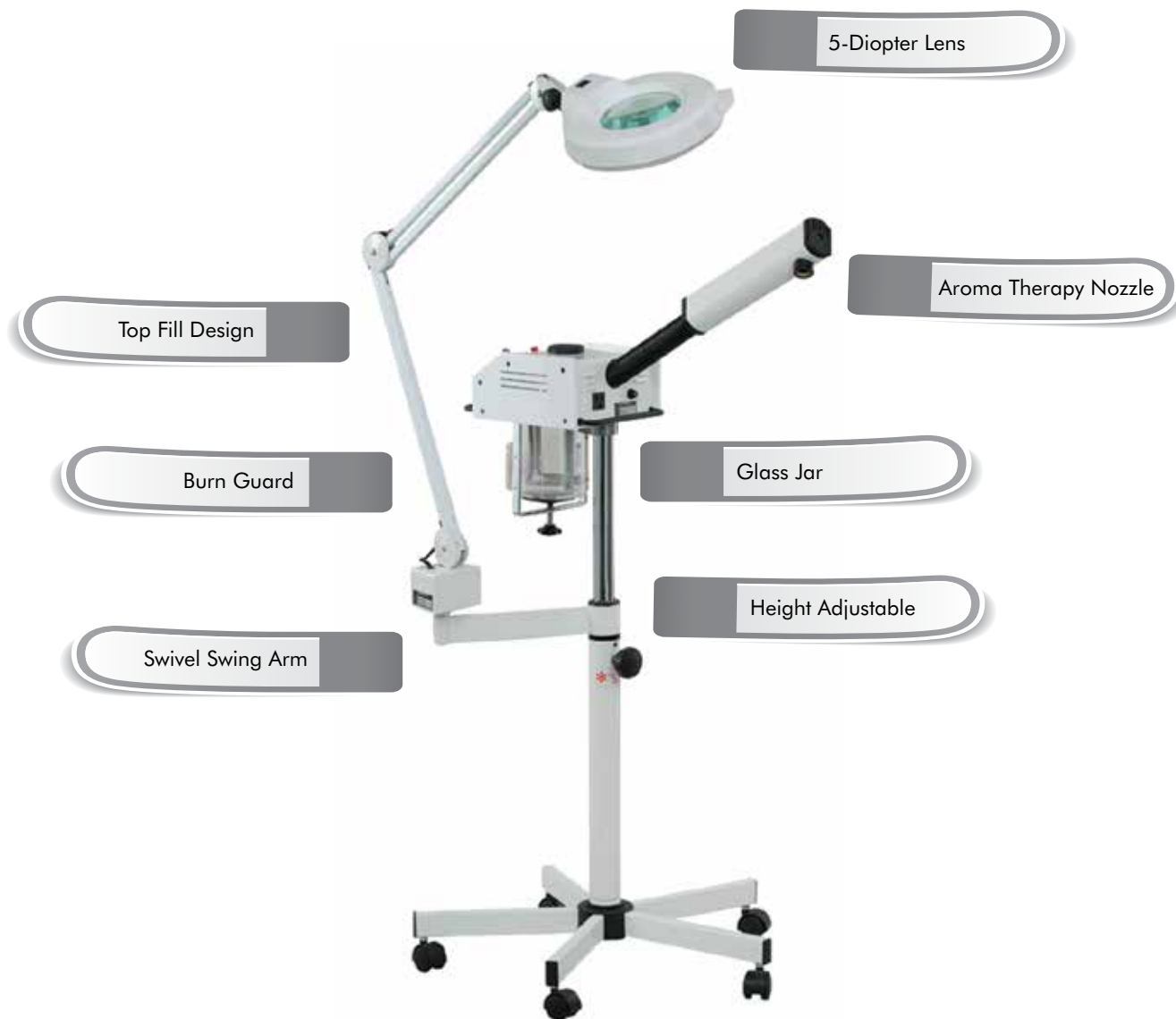
LET OFF STEAM

PARAGON® PROFESSIONAL-GRADE VAPORIZERS



ADVICE FROM INDUSTRY PROFESSIONALS

As an aesthetician, your vaporizer may be the most important piece of equipment you own. The vaporizer you choose should be of professional-grade and backed by an American company with service and parts. It needs to be something that is a business asset that helps you generate business, and not a business liability that may leave you high and dry. Buying the correct equipment will equate to minimized downtime and avoiding appointment cancellations. We understand that your budget is lean, and we want you to understand a great vaporizer shouldn't cost you an arm and a leg. While many vaporizers may look alike, it's crucial to understand the important design features that only a professional tool has. The model **101 FACIAL VAPORIZER**, pictured below, is arguably the best-selling facial vaporizer today. Here are a few features that set it apart from the rest of the pack. It's no wonder it is the best-selling vaporizer available today.



101

The **101 FACIAL VAPORIZER** has been the American standard of professional facial vaporizers for over 25 years. Built to last, the 101 Facial Vaporizer is designed with double-fuse protection, thermal sensor safety switch, and heavy-duty, powder-coated metal base. Featuring a 30-minute timer, acrylic burn guard, multidirectional nozzle, and telescoping stand on roller base. Accommodates additional aroma therapy nozzle.



P1

If you're looking for a near-indestructible vaporizer, then look no further than the **P1 FACIAL VAPORIZER**. Often copied by internet vendors, the P1 Facial Vaporizer is manufactured exclusively by Paragon, and its legendary performance is unmatched and cannot be imitated. Featuring a standard 30-minute timer, double-fuse protection, height-adjustable/multi-directional steam arm and fully encased burn guard. Accommodates additional aroma therapy nozzle.



160

MAGNIFYING LAMP

- 5-Diopter Lens
- Flicker-Free Operation
- Aluminum Cast Housing
- Internal-Balanced Springs

OPTIONS

- + Roller Caster Stand (shown)
- + Combine with Facial Vaporizers
Choose From: 101, P1

186

MAGNIFYING LAMP

- 5-Diopter Lens
- Flicker-Free Operation
- Commercial-Grade Housing
- Internal-Balanced Springs

OPTIONS

- + Roller Caster Stand (shown)
- + Combine with Facial Vaporizers
Choose From: 101, P1

156

MAGNIFYING LAMP

- 3-Diopter Lens
- Flicker-Free Operation
- Commercial-Grade Housing
- External-Balanced Springs

OPTIONS

- + Roller Caster Stand (shown)
- + Combine with Facial Vaporizers
Choose From: 101, P1

LAMPS

PARAGON® PROFESSIONAL-GRADE LAMPS

R1

INFRARED LAMP

- Ideal for Massage Therapy, Sports Therapy, and Acupuncture
- Powder Coated Metal Housing
- Internal-Balanced Springs

OPTIONS

- + Roller Caster Stand (shown)

187

LED MAGNIFYING LAMP

- Energy-Saving LED Technology
- 5-Diopter Lens
- Flicker-Free Operation
- Commercial-Grade Housing
- Internal-Balanced Springs

OPTIONS

- + Roller Caster Stand (shown)
- + Combine with Facial Vaporizers
Choose From: 101, P1





ADVICE FROM INDUSTRY PROFESSIONALS

For over a decade, dermatologists, plastic surgeons, and professional aestheticians have been using and promoting LED light therapy devices, like the PARAGON® Lumiderm. Designed and manufactured for trained professional use, the Lumiderm is maintenance free and requires no cartridges or battery replacements.



LUMIDERM

PARAGON® LED THERAPY SYSTEM

MODEL No. L1

The **LUMIDERM LED LIGHT THERAPY SYSTEM** is a new noninvasive LED light therapy that is safe and effective treatment for both men and women of all skin types and ages. Four multiple treatments and wavelengths in one panel platform stimulate skin cells in various layers to counteract the effects of aging and environment. Lumiderm is easy to operate and incorporate into your practice with existing treatments to enhance results. Use independently to target specific skin needs or in combination with microdermabrasion, Botox™, fillers, facial chemical peels, laser, and IPL treatments.



ACNE

Destroys Propionibacterium acnes (P. acnes) bacteria on the face, neck, back, and/or body, while keeping the surrounding skin tissue intact. Helps clear blemishes and reduces acne inflammation as it soothes and calms the sebaceous glands. Blue Light at 470-nanometer wavelength.



HYPERPIGMENTATION

Treats hyperpigmentation and improves the appearance of sun-induced, photo-damaged pigmentation/freckling on the face, neck, arms, hands, and shoulders. Helps to stimulate melanin deposit breakdown in epidermal layers of the skin. Green Light at 525-nanometer wavelength.



SCAR HEALING

Increase lymphatic flow to evacuate waste and stimulate cellular growth and healing. Minimize the appearance of facial redness, rosacea, irritation, inflammation, and facial vessels that occur with UV-damaged and aging skin. Amber Light at 590-nanometer wavelength.



ANTI-AGING

Stimulate fibroblast cells in macrophage cells to produce collagen, improving elasticity, scar tissue, and skin thickness. After a series of treatments, fibroblasts can continue to produce new collagen for up to 6 months. The skin will appear firmer and brighter with continued use. Red Light at 640-nanometer wavelength.



NEW ITEM!

HC78.C01

TOWEL WARMER
SMALL



HC78

TOWEL WARMER
SMALL



HC82

TOWEL WARMER
MEDIUM



HC202

TOWEL WARMER
LARGE



PC20

TOWEL WARMER
EXTRA LARGE



PC81

TOWEL WARMER
MEDIUM



S20

SANITIZER

TOWEL WARMERS

PARAGON® TOWEL WARMERS

MODEL SPECIFICATIONS

Garfield's HC-series and PC-series of towel warmers are American spas' and salons' top choice for dependability and affordability. The HC-series and PC-series of hot towel cabinets are simple to operate, have small footprints, and install in minutes. There are five models of our standard towel warmers to choose from—depending on the capacity preferred. All models feature simple 1-button operation, rust-proof aluminum interior, wire basket, and drip tray for excess condensation. Designed for wet/moist operation, all of our towel warmers quickly heat up and maintain a constant 176°F for worry-free operation.

MODEL	CAPACITY	EXTERIOR DIMS	INTERIOR DIMS
HC78	24 PCS	13¾" × 10½" × 10"	10½" × 7½" × 5½"
HC82	72 PCS	17¾" × 10½" × 14"	14½" × 7½" × 9½"
HC202	128 PCS	16¼" × 16¾" × 17½"	12¼" × 12" × 5½"



ADVICE FROM INDUSTRY PROFESSIONALS

Effective and correct use of UV Sanitizing Light can kill 99.9% of germs and help prevent the spread of bacteria and infection. Fitting most spa and nail implements, the PARAGON® PC81 and S20 UV Sanitizer Cabinets were specifically designed for the spa, salon, and nail industry and should be used in conjunction with proper procedures for sanitation, per state board and health code regulations.

MODEL	CAPACITY	EXTERIOR DIMS	INTERIOR DIMS
PC201	144 PCS	17¾" × 15½" × 20"	13¾" × 11¾" × 13¼"
PC81	48 PCS	19½" × 12½" × 13¾"	15¾" × 7½" × 7½"
S20	N/A	14½" × 8¼" × 9½"	13¼" × 7¾" × 5¼"

SKIN-SCOPES

PARAGON® SKIN INSPECTIONS TOOLS



206

SKIN SCOPE, PROFESSIONAL

Designed for professional use, the model 206 SKIN SCOPE is the perfect tool for in-depth inspection of skin, hair, and fibers. Freeze-frame technology allows the aesthetician and client to have precise detection and analysis of problematic areas. Connects to any television and is perfect for use in education. Standard 50x magnification lens and aluminum carrying case included. Optional 200X magnification lens available.



216

SKIN SCOPE

Use for in-depth inspection of skin, hair, and fibers. Freeze-frame technology allows the aesthetician and client to have precise detection and analysis of problematic areas. Connects to any television and is perfect for use in education. Standard 50x magnification lens and aluminum carrying case included. Optional 200X magnification lens available.

SKIN ANALYSIS

PARAGON® SKIN DIAGNOSIS



F1

SKIN SCANNER

The self-encased, F1 SKIN SCANNER SYSTEM utilizes UV light to reveal areas of depigmentation. Blackout cape on back panel allows for use during lit conditions. A mirror inside allows clients to view their reflection and follow along.



F2

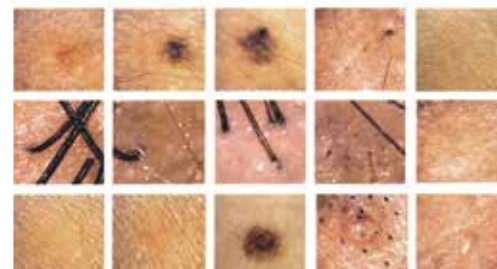
WOOD'S LAMP

The model F2 HANDHELD WOOD'S LAMP reveals areas of depigmentation not visible to the eye under normal light conditions. The UV light is used to detect the presence and severity of depigmentation, damage, or disease before becoming fully visible. Intended for use in a darkened room.



ADVICE FROM TOP PROFESSIONALS

A picture is worth a thousand words. The best way to help clients better understand skin and scalp conditions is to help them visualize the problem areas with specialized tools, e.g., Skin Scopes, Scanners, Wood's Lamps. After seeing the problems firsthand, the clients will be more agreeable with the recommended corrective treatment plans.



MOBILE SOLUTIONS

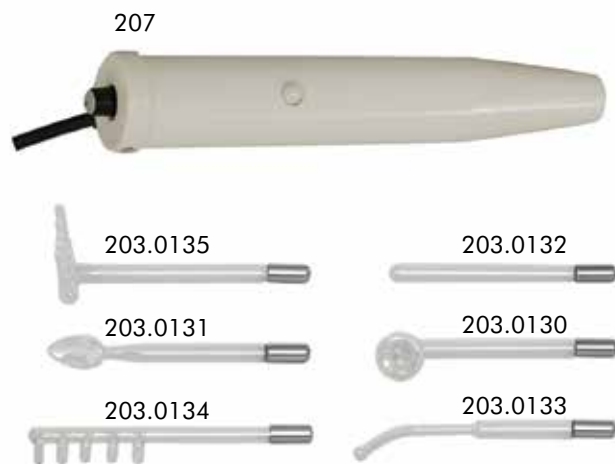
PARAGON® MOBILE SKINCARE SOLUTIONS



103

FACIAL VAPORIZER, COUNTERTOP

The model 103 **TABLETOP FACIAL VAPORIZER** is lightweight and portable with heavy-duty safety features: multidirectional steam arm, aromatherapy, and ozone. Auto-off tipping safety switch shuts down steamer to prevent the unit from operating when tipped over or fallen. Ideal for make-up counters, quick applications, portable professional facials, and home use.



207

HIGH FREQUENCY, MOBILE

The model 207 **HIGH FREQUENCY** generates a warm thermal current that stimulates and aids in sterilization. An easy to operate micro switch allows precise control. Intensity can be increased or decreased to maximize comfort during treatment. Set of 3 electrodes included: straight, pointer, and mushroom. Argon-violet electrodes are available and must be requested at the time of purchase. Additional electrodes (rake, spoon, and comb) available for purchase.

MICROPEEL

MICRODERMABRASION SYSTEM
MODEL No. 166



The model 166 **MICROPEEL MICRODERMABRASION SYSTEM** uses a fine jet of crystals to gently and painlessly peel the skin to reveal new softer skin with improved texture. Self-enclosed system with vacuum suction removes crystals along with dead skin cells. Microdermabrasion also promotes the production of new skin cells in the basal (deepest) layer of the dermis, cleans pores, and stimulates collagen networking that can further rejuvenate skin's appearance. This noninvasive procedure is simple, quick, suitable for all skin types, and has virtually no discomfort or downtime for recovery.

Microdermabrasion can be used successfully on light or dark skin and is beneficial for hyperpigmentation, acne/acne scars, fine lines, wrinkles, oily skin, enlarged pores, stretch marks, and surgical scars. Ideally situated on tabletops, countertops, or stainless steel carts. For use by licensed professionals only.



ADVICE FROM TOP PROFESSIONALS

Crystal vs. Diamond Tip. When evaluating these two popular types of microdermabrasion systems, be sure to understand the critical differences in design, features, and certifications. Crystal-based microdermabrasion systems feature high adaptability and yield faster results. It's no wonder that crystal-based systems are preferred by professional aestheticians over cheaper diamond-tip systems.

CRYSTAL	
	FINER CONTROL
✓	Crystal-based systems allow aestheticians to constantly adjust the level of abrasion to the treatment area and the client's skin condition and sensitivity. For example, when treating a person with more sensitive skin, aestheticians can reduce the crystal flow per pass.
	FASTER RESULTS
✓	Crystal-based systems allow aestheticians to tailor each pass, crystal-type (aluminum oxide or sodium bicarbonate), and session specific to the client's skin. Results and recovery are achieved much faster compared to basic diamond-tip systems.
	MORE HYGIENIC
✓	Crystal-based systems are more hygienic than the diamond-tip systems because spent crystals are sucked away immediately. Most diamond tips are not disposable and must be cleaned thoroughly between clients to prevent contamination.

SPA CARTS

STANDARD AND STAINLESS STEEL MOBILE STORAGE



H1

Chrome-finished metal frame with three shelves and one pullout tray. Assembly required.

H10

All metal construction. Glossy white powder-coated finish is easy to clean and ideal for wax rooms or paraffin treatments. Arrives fully assembled.

H2

Metal and wood construction with one drawer, mag lamp fitting, and UL listed four-outlet surge protector. Assembly required.

H3

Metal and wood construction with two drawers, mag lamp fitting, and UL listed four-outlet surge protector. Assembly required.

H8

Metal and wood construction with three shelves, pullout breadboard, and UL listed four-outlet surge protector. Assembly required.

H9

Three open shelves for easy storage of towel warmers, sanitizers, and etc. Fully assembled.

H11

Two open shelves with one half shelf and pull-out storage drawer. Fully assembled.

H12

Two half shelves, one pull-out storage drawer, and one locking compartment. Fully assembled.

H13

Two locking compartments maximize storage and helps manage shift work. Fully assembled.

MODEL	FEATURES	OVERALL DIMENSION	SECOND SHELF	THIRD SHELF
H1	3 Shelves 1 Pull-out Tray	19½" × 12" × 33"	9"	12"
H10	3 Shelves Fully Assembled	20" × 11" × 31"	13"	13"
H2	3 Shelves 1 Drawer 1 Mag Lamp Fitting 1 UL Surge Protector	21" × 15" × 32"	9½"	6½"
H3	2 Shelves 2 Drawer 1 Mag Lamp Fitting 1 UL Surge Protector	24" × 14" × 34"	8¼"	N/A
H8	3 Shelves 1 Pull-out Breadboard 1 UL Surge Protector	21" × 15" × 32"	12½"	14"

MODEL SPECIFICATIONS

Constructed from corrosion-resistant grade of stainless steel, the Paragon series of Stainless Steel Spa Utility Carts is the preferred choice of medi-spa and spa professionals. Fully welded with hemmed-edge shelf construction ensures years of sanitary, trouble-free service. Large, commercial-grade ball-bearing casters guarantee quiet operation.

MODEL	FEATURES	OVERALL DIMENSION	SECOND SHELF	THIRD SHELF
H9	3 Shelves	18½" × 16" × 30"	12"	12"
H11	3 Shelves 1 Drawer	19" × 16" × 30"	6¾"	11"
H12	2 Shelves 1 Drawer 1 Locker	21" × 16" × 30"	7¼"	N/A
H13	1 Shelf 2 Lockers	19" × 16" × 30"	N/A	N/A



LAGUNA

ELECTRIC TREATMENT TABLE
MODEL No. M20

Designed specifically for spas, medi-spas, and resorts, the **LAGUNA TREATMENT TABLE** with eAssist lift offers functionality and style. Dual electric pedestal lifts provide smooth and quiet height adjustments at the touch of a button. Fully electric controls allow technicians endless positioning for seated clients. Back and leg tilts move simultaneously.

ALTERNATE VIEWS

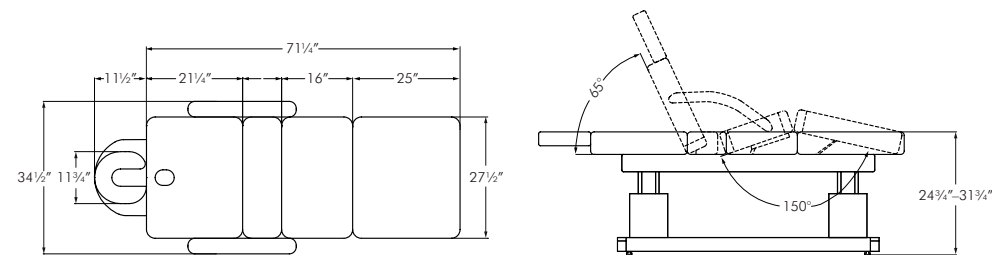


UPHOLSTERY AND BASE OPTIONS

Cream EnduraLux Upholstery
Remote Control
Dual-eAssist Motorized Base

SPECIFICATIONS

3 1/2" ComfortLux High-Density Cushioning System
Meets CA-TB117 Fire Retardant Standards
Recommended Weight Capacity: 500 lbs.





LAGUNA-S

ELECTRIC TREATMENT TABLE
MODEL No. M21

Designed specifically for spas, medi-spas, and resorts, the **LAGUNA TREATMENT TABLE** with eAssist lift offers functionality and style. Dual electric pedestal lifts provide smooth and quiet height adjustments at the touch of a button. Fully electric controls allow technicians endless positioning for seated clients. Back and leg tilts move simultaneously. Two pull-out drawers offer convenient storage.

ALTERNATE VIEWS

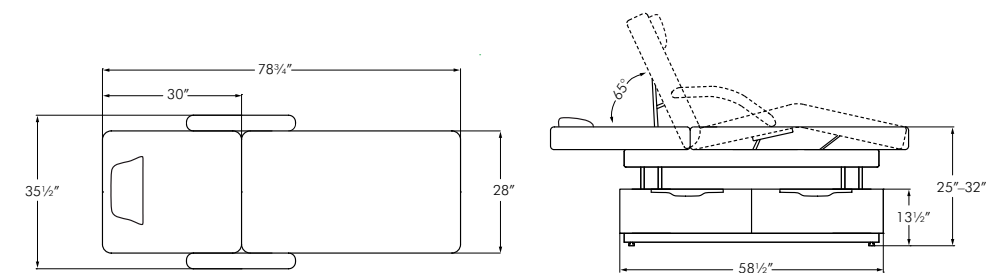


UPHOLSTERY AND BASE OPTIONS

Cream EnduraLux Upholstery
Remote Control
Dual-eAssist Motorized Base

SPECIFICATIONS

3½" ComfortLux High-Density Cushioning System
Meets CA-TB117 Fire Retardant Standards
Recommended Weight Capacity: 500 lbs.





MONARCH

ELECTRIC TREATMENT TABLE

MODEL No. 3992

Designed specifically for spas, medi-spas, and resorts, the **MONARCH TREATMENT TABLE** with eAssist motorized actuators synchronize cushion movements. Swing-away arms allow for easy mounting and dismounting. Head and leg cushions extend to adjust for client's comfort. Base cover neatly conceals undercarriage. Headrest included.

ALTERNATE VIEWS

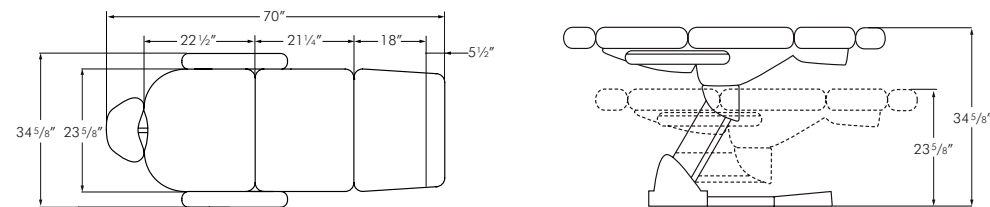


UPHOLSTERY AND BASE OPTIONS

Cream EnduraLux Upholstery
Remote Control

SPECIFICATIONS

3 1/2" ComfortLux High-Density Cushioning System
Meets CA-TB117 Fire Retardant Standards
Recommended Weight Capacity: 500 lbs.





NEWPORT

ELECTRIC TREATMENT TABLE

Model No. 3991

Designed specifically for spas, medi-spas, and resorts, the **MONARCH TREATMENT TABLE** with eAssist motorized actuators synchronize cushion movements. Swing-away arms allow for easy mounting and dismounting. Head and leg cushions extend to adjust for client's comfort. Base cover neatly conceals undercarriage. Headrest included.

ALTERNATE VIEWS

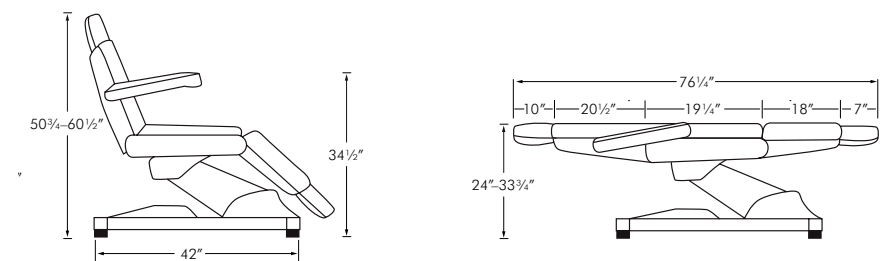


UPHOLSTERY AND BASE OPTIONS

White EnduraLux Upholstery
Hands-Free Foot Switches

SPECIFICATIONS

3 1/2" ComfortLux High-Density Cushioning System
Meets CA-TB117 Fire Retardant Standards
Recommended Weight Capacity: 500 lbs.





REDONDO

ELECTRIC TREATMENT TABLE

Model No. 3980

Electric lift treatment table with manually adjustable back and leg cushions. Segmented cushions are ergonomically designed for comfort and versatility. Reinforced rounded cushion corners. Single 110V motor with foot switch allows for hands-free operation. Heavy-gauge welded metal, powder coated frame. Headrest included.

ALTERNATE VIEWS

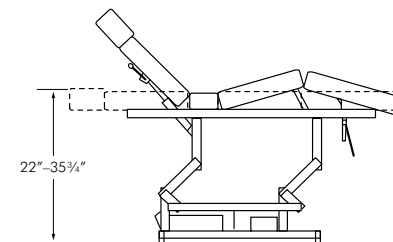
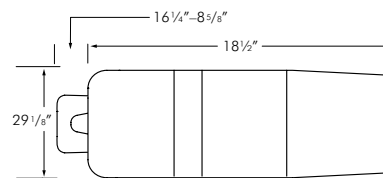


UPHOLSTERY AND BASE OPTIONS

White EnduraLux™ Upholstery
Foot-switch Control

SPECIFICATIONS

3½" ComfortLux™ High-Density Cushioning System
Meets CA-TB117 Fire Retardant Standards
Recommended Weight Capacity: 300 lbs.





MALIBU

ELECTRIC TREATMENT TABLE

Model No. 3965

The **MALIBU TREATMENT TABLE**, with eAssist Motorized Lift System, was designed specifically for spas, medi-spas, and resorts. Offering functionality and style, the electric pedestal lift provides smooth and quiet height adjustment at the touch of a button. Leg rest may be manually adjusted independently.

ALTERNATE VIEWS

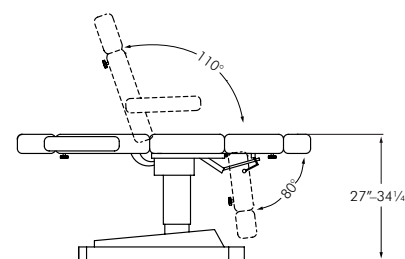
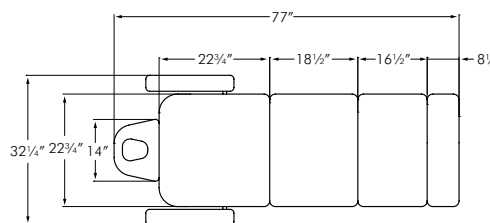


UPHOLSTERY AND BASE OPTIONS

White EnduraLux Upholstery
Remote Control
Dual-eAssist Motorized Base

SPECIFICATIONS

3 1/2" ComfortLux High-Density Cushioning System
Meets CA-TB117 Fire Retardant Standards
Recommended Weight Capacity: 500 lbs.



CARMEL

ADJUSTABLE TREATMENT TABLE

Model No. M10A

Double-duty treatment table. Ideal for shared spaces that offer both facial and massage services. Manual 6-stop adjustable back cushion with removable face cradle and armrests. Plush 4" upholstered cushion with rounded corners. Under-table shelf provides convenient storage of towel warmers, sanitizers, and supplies.



ALTERNATE VIEWS

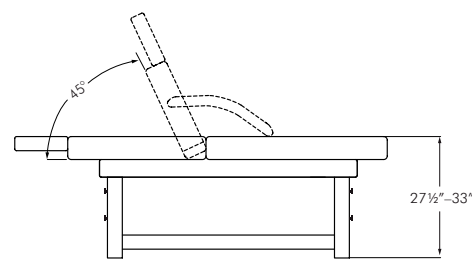
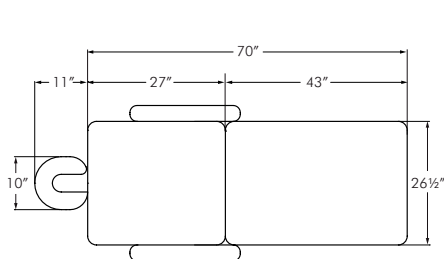


UPHOLSTERY AND BASE OPTIONS

Cream EnduraLux Upholstery

SPECIFICATIONS

3 1/2" ComfortLux High-Density Cushioning System
Meets CA-TB117 Fire Retardant Standards
Recommended Weight Capacity: 500 lbs.



SPA TABLES

STANDARD TREATMENT TABLES

SOLANA

TREATMENT TABLE

Model No. M03

Classic massage table with optional face hole. 2" Padded cushion available in custom color or Customer's Own Material (C.O.M.). Table legs can be cut at 24" to 30", please specify at the time of order. Under-table shelving for convenient storage of towel warmers, sanitizers, and supplies.

SPECIFICATIONS

Dims: 30" x 70" x 24-30" WLH
Meets CA-TB117 Fire Retardant Standards
Recommended Weight Capacity: 500 lbs.



DIEGO

TREATMENT TABLE

Model No. 3600

Spa treatment tables with removable armrests. Fully adjustable back and leg cushions. All tables lay flat and are ideal for facials and other services.

SPECIFICATIONS

Dims: 32" x 72" x 27" WLH
Meets CA-TB117 Fire Retardant Standards
Recommended Weight Capacity: 350 lbs.



HUNTINGTON

TREATMENT TABLE, HYDRAULIC

Model No. 3959

Spa treatment tables with hydraulic base and removable armrests. Table height is adjustable from 25"-31". Fully adjustable back and leg cushions. All tables lay flat and are ideal for facials and other services.

SPECIFICATIONS

Dims: 28" x 70" x 25-31" WLH
Meets CA-TB117 Fire Retardant Standards
Recommended Weight Capacity: 350 lbs.





HUDSON

LUXURY BARBER CHAIR
Model No. 6389

The HUDSON BARBER CHAIR is large and luxurious with lacquered armrests and toggle foot brake. Reclining back cushions and adjustable headrest on heavy-duty hydraulic base. Upholstered leg panels lift as seat reclines. Hand-tufted cushions and stitching details replicate vintage models.

SPECIFICATIONS

Dims: 27" W x 20" I/W

ALTERNATE VIEWS



KELTON

RETRO BARBER CHAIR
Model No. 6106

The **KELTON BARBER CHAIR** is a modern barber chair with retro flair. Reclining back cushions and adjustable headrest on heavy-duty hydraulic base. Upholstered leg panels lift as seat reclines. Stitching details replicate vintage models.

SPECIFICATIONS

Dims: 28" W × 20½" I/W

ALTERNATE VIEWS



BARRINGTON

DELUXE BARBER CHAIR
Model No. 6108

The **BARRINGTON BARBER CHAIR** is elegant with rich wood detailing. Reclining back cushions and adjustable headrest on heavy-duty hydraulic base. Upholstered leg panels lift as seat reclines. Hand-tufted cushions and stitching details replicate vintage models.

SPECIFICATIONS

Dims: 27½" W × 20½" I/W

ALTERNATE VIEWS



KEYVYN

STUDIO MAKEUP CHAIR
Model No. 1960

The legendary **KEYVYN** and **CARLA STUDIO MAKEUP CHAIRS** have been makeup industry staples for over 40 years. Perfect for finishing salons, theatre, and film studios. Specifically designed with makeup artists in mind, featuring heavy-duty reclining mechanisms, removable headrests, and lush, high backrest.

ALTERNATE VIEWS



UPHOLSTERY OPTIONS

Black Upholstery
Custom-Color Upholstery
Customer Own Material Upholstery | 3 Yards

FOOTREST OPTIONS

U-Footrest

BASE OPTIONS

HB04 Extra-Wide, 26" Hydraulic Base



CARLA

STUDIO MAKEUP CHAIR
Model No. 1970

Specifically designed for professionals in the beauty, theatre, and film industries. Reclining back and adjustable headrest ideal for make-up application, facials, eyebrow shaping, and waxing. Narrow back cushions allow technicians to step closer to the client, reducing back strain. Large base and high back cushions provide maxim support in recline.

ALTERNATE VIEWS



FEATURES

HEADREST

The height-adjustable and removable headrest design is ideal for makeup application, facials, eyebrow shaping, and facial waxing. **KEYVYN'S** headrest is of modern-minimalist design while **CARLA'S** headrest features more traditional, tapered lines.

BESPOKE CUSTOMIZATION

Have it made uniquely yours. We can match its upholstery to all colors (see page 103), and if you have something exotic in mind... send us your fabric for Customer Own Material (C.O.M.) upholstery service at no additional charge!

WIDE SEATING COMFORT

The thick and generous seat cushion provides clients maximum comfort during treatment and/or makeup sessions. Inner Arm Width: 20".

STABILITY

We pair our makeup chairs with the biggest hydraulic base we make. With a bigger footprint, the extra-wide, 26" diameter hydraulic base offers more stability during recline.



VANCE

ALL-PURPOSE CHAIR
Model No. 1590

All-purpose chair with reclining back cushion and adjustable headrest. Suitable for styling, cutting, and shampooing. Reclining feature accommodates menu expansion to offer spa and make-up services. Reinforced PU loop armrests with metal frame and underbody. Gas-lift assisted recline for smooth support. Recline handle located on the left side (when seated). Padded seat upholstered in black vinyl with extra lumbar support. Additional accessory for mannequin heads available for purchase.

ALTERNATE VIEWS



UPHOLSTERY OPTIONS

Black Upholstery

BASE OPTIONS

HB03 Hydraulic Base



PLAZA

ALL-PURPOSE CHAIR
Model No. 1509

Simple, chic, and elegant seating designed with clean lines and low, wide proportions. Lacquered wood armrests give a sense of luxury and warmth. All-purpose chair with reclining back cushion and adjustable headrest. Suitable for styling, cutting, and shampooing. Reclining feature accommodates menu expansion to offer spa and make-up services. Upholstered armrests with metal frame and underbody. Gas-lift assisted recline for smooth support.

ALTERNATE VIEWS



UPHOLSTERY OPTIONS

Black Upholstery

BASE OPTIONS

HB15 Hydraulic Base



STYLE

From modern minimalist to updated traditional, Paragon's portfolio of styling chairs have helped salon owners present the perfect look for over 50 years. It's no wonder our salon styling chairs are becoming the new American classic. It also helps that we don't charge an arm and a leg for a great product.



02 OPTIONS



FABRIC

Choose in-stock, standard black upholstery for a quick turnaround or select from over 60 custom color options to match your vision and design. If that's not enough, we can also create the chair of your dreams using fabric you provide. All upholstered fabrics meet or exceed CA-117 standards.

01 OPTIONS

BASES

Choose from 9 different types of hydraulic or electric bases to fit your look and function. Paragon's hydraulic bases have been an industry standard for over 50 years, with our electric bases are steadily gaining popularity. Each base is backed by industry leading warranties and service.



03 OPTIONS

04 OPTIONS



PURCHASE

With offices nationwide, contact a friendly sales representative near you to request fabric samples, review options, and build the salon of your dreams. From your first studio space to your second or third full service remodel, our knowledgeable staff is here to accommodate your changing needs.

01 CHOOSE YOUR STYLING CHAIR



FAMILA



DANCE



PERPETUA



CIELO



ARDON



MADISON



BARB



HARPER



WOLCOTT



SMYTH



PLAZA



HANSEN



ALTON



ARCH

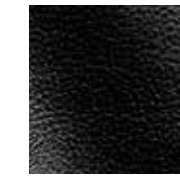


CHESHIRE



LOUIE

02 CHOOSE YOUR UPHOLSTERY



STANDARD BLACK

Meets CA-TB117
In stock and ready to ship



CUSTOM COLOR

Meets CA-TB117
2-4 weeks lead time
In stock and ready to ship
Additional production cost



CUSTOMER OWN MATERIAL (COM)

Meets CA-TB117
4-6 weeks lead time
Additional production cost

03 CHOOSE YOUR BASE



HB17 - 23" DIA



HB00 - 23" DIA



HB09 - 26" DIA



EB01 - 23" x 19"



EB03 - 21 3/4" DIA



EB04 - 21 3/4" DIA



EB05 - 21 3/4" DIA



EB06 - 19 1/2" DIA



EB07 - 23" DIA

FAMILA

SALON STYLING CHAIR
Model No. 1020

The **FAMILA SALON STYLING CHAIR** is simple, chic, and elegant. Designed with clean lines and low, wide proportions. Handtufted detailing on seat and seat-back cushion. Subtly canted back for enduring comfort. Also available as an all-purpose reclining chair with adjustable headrest.



UPHOLSTERY OPTIONS

Black Upholstery
Custom-Color Upholstery
C.O.M. Upholstery

FOOTREST OPTIONS

T-Footrest
U-Footrest

VARIATIONS

Dryer Chair
Shampoo Chair
AP Chair

DANCE

SALON STYLING CHAIR
Model No. 1035

The **DANCE SALON STYLING CHAIR** has welted cushions and subtly canted back for enduring comfort. Matching piping along the seams reinforces the clean lines of this classic salon chair. Also available as an all-purpose reclining chair with adjustable headrest.



UPHOLSTERY OPTIONS

Black Upholstery
Custom-Color Upholstery
C.O.M. Upholstery

FOOTREST OPTIONS

T-Footrest
U-Footrest

VARIATIONS

Dryer Chair
Shampoo Chair
AP Chair

STANDARD HYDRAULIC BASES



HB17

HB00

HB09

DRYER CHAIRS



1220

STANDARD HYDRAULIC BASES



HB17

HB00

HB09

DRYER CHAIRS



1235

ELECTRIC BASE



EB01

WIRELESS ELECTRIC BASES



EB03



EB04

eASSIST ELECTRIC BASES



EB05



EB06



EB07

ELECTRIC BASE



EB01

WIRELESS ELECTRIC BASES



EB03



EB04

eASSIST ELECTRIC BASES



EB05



EB06



EB07

PERPETUA

SALON STYLING CHAIR
Model No. 6675

The **PERPETUA SALON STYLING CHAIR** is traditional seating for a timeless appeal. Single piece molded plywood with a generous layer of sculpted cushioning provides enduring comfort. Industrial black vinyl and reinforced PU armrests are durable and easy to maintain.



UPHOLSTERY OPTIONS

Black Upholstery

FOOTREST OPTIONS

U-Footrest

VARIATIONS

Dryer Chair

CIELO

SALON STYLING CHAIR
Model No. 6676

The **CIELO SALON STYLING CHAIR** is quintessential modern comfort, designed for prolonged seating during cuts, coloring, and processing. Contoured back cushion supports and embraces seated clients for enduring comfort. Chromed armrests with padded cushions.



UPHOLSTERY OPTIONS

Black Upholstery

FOOTREST OPTIONS

U-Footrest

VARIATIONS

Dryer Chair

STANDARD HYDRAULIC BASES



HB17

HB00

HB09

DRYER CHAIRS



1275

STANDARD HYDRAULIC BASES



HB17

HB00

HB09

DRYER CHAIRS



1276

ELECTRIC BASE



EB01

WIRELESS ELECTRIC BASES



EB03

EB04

eASSIST ELECTRIC BASES



EB05

EB06

EB07

ELECTRIC BASE



EB01

WIRELESS ELECTRIC BASES



EB03

EB04

eASSIST ELECTRIC BASES



EB05

EB06

EB07

ARDON

SALON STYLING CHAIR
Model No. 6672

The **ARDON SALON STYLING CHAIR** is cool and formal with clean lines. Italian inspired styling with molded vinyl for a sleek European look. Chrome-finished tubular frame with armrest detailing.



UPHOLSTERY OPTIONS

Black Upholstery

FOOTREST OPTIONS

T-Footrest

VARIATIONS

Dryer Chair

MADISON

SALON STYLING CHAIR
Model No. 9001

The **MADISON SALON STYLING CHAIR** is modern comfort, designed for prolonged seating during cuts, coloring, and processing. Contoured back cushion supports and embraces seated clients for enduring comfort. Chromed armrests with padded cushions.



UPHOLSTERY OPTIONS

Black Upholstery
Custom-Color Upholstery
C.O.M. Upholstery

FOOTREST OPTIONS

U-Footrest

VARIATIONS

Dryer Chair

STANDARD HYDRAULIC BASES



HB17

HB00

HB09

DRYER CHAIRS



1272

STANDARD HYDRAULIC BASES



HB17

HB00

HB09

DRYER CHAIRS



1201

ELECTRIC BASE



EB01

WIRELESS ELECTRIC BASES



EB03

EB04

eASSIST ELECTRIC BASES



EB05

EB06

EB07

ELECTRIC BASE



EB01

WIRELESS ELECTRIC BASES



EB03

EB04

eASSIST ELECTRIC BASES



EB05

EB06

EB07

BARB

SALON STYLING CHAIR
Model No. 9002

The **BARB SALON STYLING CHAIR** is a reinterpretation of the classic barber chair seat. Plush cushions with vintage-inspired chromed armrests. Seaming detail creates a luxurious seated experience.



UPHOLSTERY OPTIONS

Black Upholstery
Custom-Color Upholstery
C.O.M. Upholstery

FOOTREST OPTIONS

T-Footrest

VARIATIONS

Dryer Chair

HARPER

SALON STYLING CHAIR
Model No. 9004

The **HARPER SALON STYLING CHAIR** is modern comfort, designed for prolonged seating during cuts, coloring, and processing. Contoured back cushion supports and embraces seated clients for enduring comfort. Molded plywood armrests finished in honey oak.



UPHOLSTERY OPTIONS

Black Upholstery
Custom-Color Upholstery
C.O.M. Upholstery

FOOTREST OPTIONS

U-Footrest

VARIATIONS

Dryer Chair

STANDARD HYDRAULIC BASES



HB17



HB00



HB09

DRYER CHAIRS



1202

STANDARD HYDRAULIC BASES



HB17



HB00

DRYER CHAIRS



1204

ELECTRIC BASE



EB01

WIRELESS ELECTRIC BASES



EB03



EB04

eASSIST ELECTRIC BASES



EB05



EB06



EB07

ELECTRIC BASE



EB01

WIRELESS ELECTRIC BASES



EB03



EB04

eASSIST ELECTRIC BASES



EB05



EB06



EB07

WOLCOTT

SALON STYLING CHAIR
Model No. 9005

The **WOLCOTT SALON STYLING CHAIR** is scaled for comfort with a perfect balance of form and function. Generous-sized seats and rounded wooden armrests.



UPHOLSTERY OPTIONS

Black Upholstery
Custom-Color Upholstery
C.O.M. Upholstery

FOOTREST OPTIONS

T-Footrest
U-Footrest

VARIATIONS

Dryer Chair

SMYTH

SALON STYLING CHAIR
Model No. 9006

The **SMYTH SALON STYLING CHAIR** is a refined alternative to traditional salon seating. Chrome-finished flat bar frame and wooden armrests provide warmth and elegance.



UPHOLSTERY OPTIONS

Black Upholstery
Custom-Color Upholstery
C.O.M. Upholstery

FOOTREST OPTIONS

U-Footrest

VARIATIONS

Dryer Chair

STANDARD HYDRAULIC BASES



HB17

HB00

HB09

DRYER CHAIRS



1205

STANDARD HYDRAULIC BASES



HB17

HB00

HB09

DRYER CHAIRS



1206

ELECTRIC BASE



EB01

WIRELESS ELECTRIC BASES



EB03



EB04

eASSIST ELECTRIC BASES



EB05



EB06



EB07

ELECTRIC BASE



EB01

WIRELESS ELECTRIC BASES



EB03



EB04

eASSIST ELECTRIC BASES



EB05



EB06



EB07

PLAZA

SALON STYLING CHAIR
Model No. 9009

The **PLAZA SALON STYLING CHAIR** is simple, chic, and elegant seating designed with clean lines and low, wide proportions. Lacquered wood armrests give a sense of luxury and warmth.



UPHOLSTERY OPTIONS

Black Upholstery
Custom-Color Upholstery
C.O.M. Upholstery

FOOTREST OPTIONS

T-Footrest
U-Footrest

VARIATIONS

Dryer Chair
Shampoo System
AP Chair

HANSEN

SALON STYLING CHAIR
Model No. 9015

The **HANSEN SALON STYLING CHAIR** is classic contemporary design that has come to be a designer favorite. Impeccable tailoring with fluid curves that define the shapes of mid-century modern charm.



UPHOLSTERY OPTIONS

Black Upholstery
Custom-Color Upholstery
C.O.M. Upholstery

FOOTREST OPTIONS

T-Footrest
U-Footrest

VARIATIONS

Dryer Chair

STANDARD HYDRAULIC BASES



HB17

HB00

HB09

DRYER CHAIRS



1209

STANDARD HYDRAULIC BASES



HB17

HB00

HB09

DRYER CHAIRS



1215

ELECTRIC BASE



EB01

WIRELESS ELECTRIC BASES



EB03

EB04

eASSIST ELECTRIC BASES



EB05

EB06

EB07

ELECTRIC BASE



EB01

WIRELESS ELECTRIC BASES



EB03

EB04

eASSIST ELECTRIC BASES



EB05

EB06

EB07

ALTON

SALON STYLING CHAIR
Model No. 9022

The **ALTON SALON STYLING CHAIR** is modern comfort, designed for bright, open spaces. Cantilevered back appears to float weightlessly, suspended with hidden support.



UPHOLSTERY OPTIONS

Black Upholstery
Custom-Color Upholstery
C.O.M. Upholstery

FOOTREST OPTIONS

T-Footrest
U-Footrest

VARIATIONS

Dryer Chair

ARCH

SALON STYLING CHAIR
Model No. 9017

The **ARCH SALON STYLING CHAIR** is tailored and practical, designed for comfort with contoured cushions and traditional appeal. Brushed finished armrests hide dust and fingerprints.



UPHOLSTERY OPTIONS

Black Upholstery

FOOTREST OPTIONS

U-Footrest

VARIATIONS

Dryer Chair

STANDARD HYDRAULIC BASES



HB17

HB00

HB09

DRYER CHAIRS



1222

STANDARD HYDRAULIC BASES



HB17

HB00

HB09

DRYER CHAIRS



1217

ELECTRIC BASE



EB01

WIRELESS ELECTRIC BASES



EB03



EB04

eASSIST ELECTRIC BASES



EB05



EB06



EB07

ELECTRIC BASE



EB01

WIRELESS ELECTRIC BASES



EB03



EB04

eASSIST ELECTRIC BASES



EB05



EB06



EB07

CHESHIRE

SALON STYLING CHAIR
Model No. 1007

The **CHESHIRE SALON STYLING CHAIR** is modern comfort, designed with a whimsical flair. Curved lines and asymmetrical back make this a favorite for trendsetters. Seat and back cushions can be upholstered in matching or different colors.



UPHOLSTERY OPTIONS

Black Upholstery
Custom-Color Upholstery
C.O.M. Upholstery

FOOTREST OPTIONS

As Shown

VARIATIONS

Dryer Chair

LOUIE

SALON STYLING CHAIR
Model No. 1008

The **LOUIE SALON STYLING CHAIR** is a playful reinterpretation of the traditional armchair. Curved lines with a medallion backrest provides robust seating with a touch of formal elegance. Ideal for blow dry bars and full service salons.



UPHOLSTERY OPTIONS

Black Upholstery
Custom-Color Upholstery
C.O.M. Upholstery

FOOTREST OPTIONS

T-Footrest

VARIATIONS

Dryer Chair

STANDARD HYDRAULIC BASES



HB17

HB00

HB09

STANDARD HYDRAULIC BASES



HB17

HB00

HB09

ELECTRIC BASE

WIRELESS ELECTRIC BASES

eASSIST ELECTRIC BASES



EB01

EB03

EB04



EB05

EB06

EB07

ELECTRIC BASE

WIRELESS ELECTRIC BASES

eASSIST ELECTRIC BASES



EB01

EB03

EB04



EB05

EB06

EB07

ELEVATE

HYDRAULIC AND ELECTRIC BASE OPTIONS

HYDRAULIC BASE



HB17

Base Plate: 23" Round
Finish: Chromed
Warranty: 5-Year



HB00

Base Plate: 23" Round
Finish: Chromed
Warranty: 5-Years



HB09

Base Plate: 26" Star
Finish: Chromed
Warranty: 5-Years

WIRELESS ELECTRIC BASE



EB03

Base Plate: 21¾" Round
Finish: Brushed
Warranty: 1-Year



EB04

Base Plate: 21¾" Square
Finish: Brushed
Warranty: 1-Year



EB01

Base Plate: 23 × 19" Rectangle
Color: Black
Electrical: 110V
Warranty: 2-Year Warranty

eASSIST ELECTRIC BASE



EB05

Base Plate: 21¾" Round
Finish: Chrome/ Brushed
Warranty: 1-Year



EB06

Base Plate: 21¾" Square
Finish: Chrome/ Brushed
Warranty: 1-Year



EB07

Base Plate: 21¾" Round
Finish: Chrome
Warranty: 1-Year

OVERVIEW

Let's try to save you some time. Here's a quick comparison chart of our styling chairs including all available upholstery & base options, lead-time, and dimensions. Use it as quick reference guide to help you pick the salon styling chair that best fits your taste and style.

	UPHOLSTERY OPTIONS				BASE OPTIONS			DIMENSIONS & SPECIFICATIONS				
	Standard Black Upholstery 3-5 Business Days	Custom Color Upholstery 2-4 Weeks Lead Time	Customer Own Material Upholstery 2-4 Weeks Lead Time 2 Yards	Meets CATB17 Standards	Hydraulic Base Options: HB00, HB09, HB17	Electric Base Options: EB01, EB03, EB04, EB05, EB06, EB07	Footrest Options	Inner-Arm Width	Outer-Arm Width	Min Height of Seat Cushion Based on HB17 Hydraulic Base	Max Height of Seat Cushion Based on HB17 Hydraulic Base	Min Height of Back Cushion Based on HB17 Hydraulic Base
FAMILIA SALON STYLING CHAIR MODEL NO. 1020		•	•	•	•	•	U/T	19½"	22½"	19½"	26"	35"
DANCE SALON STYLING CHAIR MODEL NO. 1035		•	•	•	•	•	U/T	18½"	22"	18½"	25"	33"
PERPETUA SALON STYLING CHAIR MODEL NO. 6675	•		•	•	•	•	U	19½"	24"	18½"	25"	34½"
ARDON SALON STYLING CHAIR MODEL NO. 6676	•		•	•	•	•	U	20"	25½"	19½"	26"	34"
CIELO SALON STYLING CHAIR MODEL NO. 6672	•		•	•	•	•	T	19¼"	22¾"	17¼"	23¾"	31½"
MADISON SALON STYLING CHAIR MODEL NO 9001	•	•	•	•	•	•	U	19¼"	23"	19½"	26"	32½"
BARB SALON STYLING CHAIR MODEL NO 9002	•	•	•	•	•	•	U	19"	22"	20"	26½"	33"
ALTON SALON STYLING CHAIR MODEL NO 9022	•	•	•	•	•	•	U/T	19¼"	22¼"	19"	25½"	33"
HARPER SALON STYLING CHAIR MODEL NO 9004	•	•	•	•	•	•	U	19"	22"	19"	25½"	32"
WOLCOTT SALON STYLING CHAIR MODEL NO 9005	•	•	•	•	•	•	U/T	19"	23¾"	18½"	25"	33"
PLAZA SALON STYLING CHAIR MODEL NO 9009	•	•	•	•	•	•	U/T	19½"	25½"	19½"	26"	35½"
HANSEN SALON STYLING CHAIR MODEL NO 9015	•	•	•	•	•	•	U/T	19¾"	25"	18½"	25"	33"
SMYTH SALON STYLING CHAIR MODEL NO 9006	•	•	•	•	•	•	U	18½"	23¼"	19"	25½"	34½"
ARCH SALON STYLING CHAIR MODEL NO 9017	•	•	•	•	•	•	U	19¾"	21½"	18"	24½"	33¼"
CHESHIRE SALON STYLING CHAIR MODEL NO 1007		•	•	•	•	•	T	18½"	26½"	20"	26½"	36"
LOUIS SALON STYLING CHAIR MODEL NO 1008		•	•	•	•	•	T	18½"	26½"	20"	26½"	36"



SHAMPOO

40A

The 40A SHAMPOO BACKWASH SYSTEM is intuitively designed to automatically adjust to each client's comfort during recline by redistributing weight and alleviating tension and strain at the neck. Back cushion pivots to lift and support clients during recline. Seat cushion slides forward to redistribute seated weight. The height is specifically designed to be lower than most shampoo systems available today to deliver ultimate client and stylist comfort. The tilt-adjustable porcelain bowl is deep and wide, offering the highest level of stain resistance. UPC Listed.

ALTERNATE VIEWS



UPHOLSTERY OPTIONS

Black Upholstery

BOWL OPTIONS

White Porcelain, Stock
Black Porcelain, Special Order

FAUCET FIXTURE OPTIONS

UPC Listed GLT05 Fixture, Standard
UPC Listed GLT06 Fixture, By Request

PLUMBING OPTIONS

Plumbs to Floor
Plumbs to Back





SHAMPOO

50A

The 50A SHAMPOO BACKWASH SYSTEM shares the same platform as the 40A, but with a distinctly different seating design. The height is specifically designed to be lower than most shampoo systems available today to deliver ultimate client and stylist comfort. The tilt-adjustable porcelain bowl is deep and wide, offering the highest level of stain resistance. UPC Listed.

ALTERNATE VIEWS



UPHOLSTERY OPTIONS

Black Upholstery
Custom-Color Upholstery
C.O.M. Upholstery

BOWL OPTIONS

White Porcelain, Stock
Black Porcelain, Special Order

FAUCET FIXTURE OPTIONS

UPC Listed GLT05 Fixture, Standard
UPC Listed GLT06 Fixture, By Request

PLUMBING OPTIONS

Plumbs to Floor
Plumbs to Back



SHAMPOO

PLAZA

MODEL No.805

The **PLAZA SHAMPOO BACKWASH SYSTEM** is an extension of the popular Plaza Salon Styling Chair and has a few tricks up its sleeve. Side lever releases back cushion to lift and support clients during recline. Seat cushion slides forward to redistribute seated weight. The tilt-adjustable porcelain bowl is deep and wide, offering the highest level of stain resistance. UPC Listed.

ALTERNATE VIEWS



UPHOLSTERY OPTIONS

Black Upholstery

BOWL OPTIONS

Black Porcelain

FAUCET FIXTURE OPTIONS

UPC Listed GLT06 Fixture

PLUMBING OPTIONS

Plumbs to Floor
Plumbs to Back

SALON SINKS

STANDALONE SHAMPOO SINKS



FAUCETS

COMPLETE KITS COMPATIBLE WITH MOST
INDUSTRY STANDARD SALON SINKS

32

The **MODEL 32 ABS** plastic shampoo sink is the choice for budget-conscious build-outs. Complete with faucet fixture and atmospheric vacuum breaker. Neck cushions available for purchase. Neck cushions make any shampoo bowl more comfortable by reducing neck and back strain. UPC Listed.

FAUCET FIXTURE OPTIONS

UPC Listed GLT05 Fixture, Standard
UPC Listed GLT06 Fixture, By Request

OPTIONS

Neck Cushion Available



12, 22

The **MODEL 12** and **MODEL 22** fiberglass shampoo sinks have long been industry standards for functionality and durability. Complete with faucet fixture and atmospheric vacuum breaker. Neck cushions available for purchase. Neck cushions make any shampoo bowl more comfortable by reducing neck and back strain. UPC Listed.

FAUCET FIXTURE OPTIONS

UPC Listed GLT05 Fixture, Standard
UPC Listed GLT06 Fixture, By Request

OPTIONS

Neck Cushion Available



20

The **MODEL 20** is the ultimate stand-alone bowl. Shampoo sink with tilt-adjust porcelain bowl, complete faucet fixture, atmospheric vacuum breaker, neck cushion, and stainless steel pedestal stand with removable back access panel. UPC Listed.

BOWL OPTIONS

White Porcelain, Stock

FAUCET FIXTURE OPTIONS

UPC Listed GLT05 Fixture, Standard
UPC Listed GLT06 Fixture, By Request

PLUMBING OPTIONS

Plumbs to Floor
Plumbs to Back



GLT05

Shampoo faucet with chromed spiral-bound spray and atmospheric vacuum breaker. Large wide handle allows for forearm control when hands are soiled. UPC listed.



GLT06

Shampoo faucet with two-function spiral-bound spray and double-check valve system. Plastic spray head has spray and aerated flow. UPC listed.



FAMILA

MODEL No.1420



SHAMPOO SEATING

ADJUSTABLE SHAMPOO SEATS



TRACY

MODEL No. 1465LR



MAYBELLE

MODEL No. 1441LR



MAYBELLE II

MODEL No. 1446LR

DANCE

MODEL No.1435



PENNY

MODEL No. 1460LR



LINK

MODEL No. 1480

COMPLETE THE LOOK

All our salon styling chairs can be translated into dryer chair counterparts. Dryer chairs are customized to your dryer size and bench-made in Southern California, just as they have been since 1958.



PLAZA

DRYER CHAIR
MODEL No. 1256

The **PLAZA DRYER CHAIR** is a special extension of the **PLAZA** styling chair featuring a canted back and deep luxurious seating. Chrome accents are modern and clean. Shown with **AURA, UL-LISTED** professional salon super-hot dryer.

DRYER CHAIR

FITS MOST STANDARD SALON DRYERS

CANON

MODEL No. 1255LR

The **CANON DRYER CHAIR** is an updated, retro-chic design of the classic beauty parlor chair, featuring a fold-down leg rest. Leg rest provides prolonged comfort for drying, setting, and other services. Order with or without armrest. Shown with **AURA, UL-LISTED** professional salon super-hot dryer. Made in USA.

UPHOLSTERY OPTIONS

Black Upholstery
Custom-Color Upholstery
C.O.M. Upholstery



ALMONT

MODEL No. 1228LR

Compactly scaled, the **ALMONT DRYER CHAIR** features canted-back posture and deep seating. Chromed frame is functional and modern. Shown with **AURA, UL-LISTED** professional salon super-hot dryer.

UPHOLSTERY OPTIONS

Black Upholstery
Custom-Color Upholstery
C.O.M. Upholstery



DEVON

MODEL No. 1240

The **DEVON DRYER CHAIR** is compactly scaled and simple in form and function. Fits tight spaces and ideal for suite salons. Chrome-finished frame is easy to clean and adds polish to the overall look. Shown with **AURA, UL** professional salon super-hot dryer.

UPHOLSTERY OPTIONS

Black Upholstery
Custom-Color Upholstery
C.O.M. Upholstery



PROCESSING...



AURA

SUPERHOT DRYER
Model No. 550

SPECIFICATION

- Available with or without wheel and handle kit
- Dual hood assembly



HOODIE

DOWNWARD DRAFT DRYER
Model No. DI05

SPECIFICATION

- Wall mount version available
- Dual hood assembly



SUPERAIRE

ADVANCED DRYER
Model No. E5000

SPECIFICATION

- Largest hood in the industry
- Dual hood assembly



ECLIPSE

STEAM COLOR PROCESSOR
MODEL No. 750

SPECIFICATION

- Wall mount version available
- Variable Time
- Low/High Temperature



ECLIPSE II

STEAM COLOR PROCESSOR
Model No. 80ES

SPECIFICATION

- Wall mount version available
- Variable Time
- Variable Temperature



LUMASHINE

ADVANCE INFRARED PROCESSOR
Model No. E3000

SPECIFICATION

- Wall mount version available
- Variable Time



BRAVURA

ADVANCE INFRARED PROCESSOR
Model No. E4000

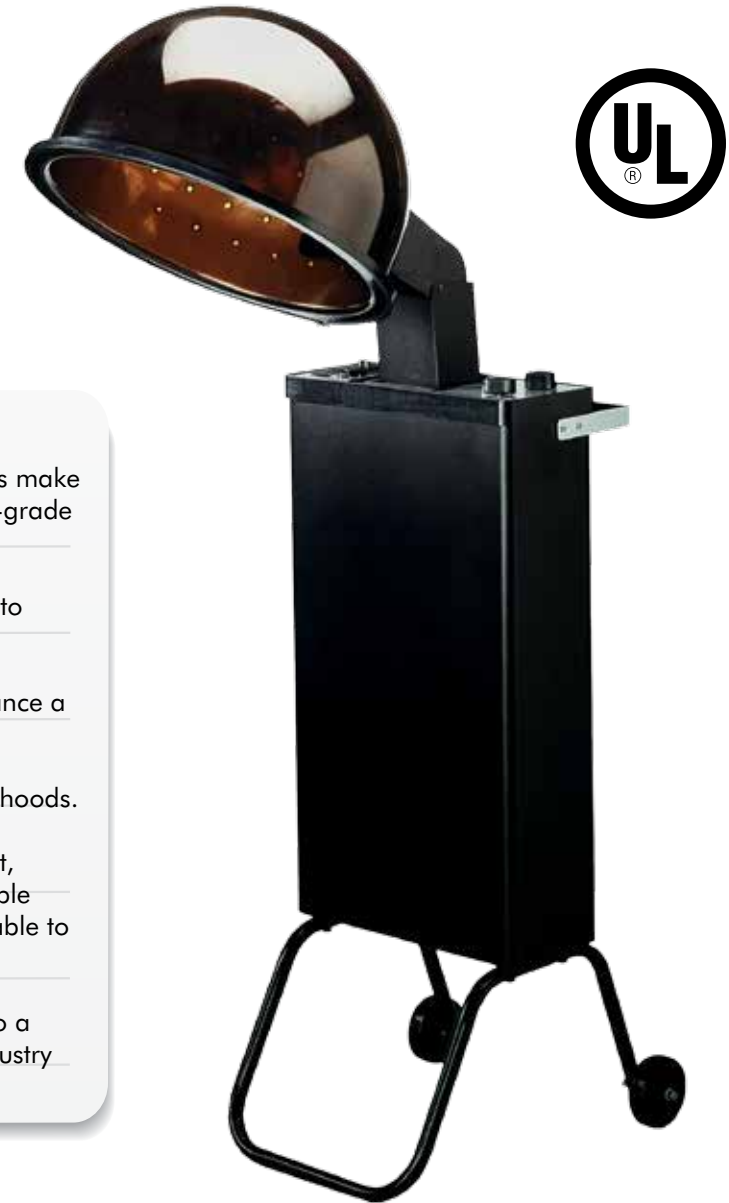
SPECIFICATION

- Quartz infrared technology
- Independent heat lamp operation

AURA

BONNET DRYER
Model No. 550

The UL-LISTED, AURA SUPER-HOT SALON DRYER has been a staple in the beauty industry for decades. Extra-hot temperatures dry hair faster. Large powerful fan increases air circulation and heats air hotter, faster. Variable time and temperature settings. Available with or without wheel kit and handle.



Powerful, quiet motor and larger heating elements make this dryer a super-hot dryer. UL listed commercial-grade salon appliance.

Variable time and temperature settings allow you to easily and quickly select and change settings.

Top-load dust filters make cleaning and maintenance a breeze.

Dual hood assembly with large espresso smoked hoods.

Box dryer is space efficient with a smaller footprint, making it easier to store and maneuver. Compatible replacement for all brands. Conversion kits available to accommodate older-style box dryers.

Easy to assemble wheel kit converts booth dryer to a mobile dryer that can be pushed behind most industry standard styling chairs.

SPECIFICATION

Hood ID: 12½"

Electrical: 120V, 1320W, 11A

HOODIE

DOWNWARD DRAFT DRYER
MODEL No. DL05

The HOODIE salon dryer's dual hood assembly is a unique feature that creates a predominantly downward draft and virtually eliminated the need for hair nets. Modern design with black-on-black exterior and chromed accents. Available on floor stand with casters or wall-mounted.



Variable time and temperature settings allow you to easily and quickly select and change settings.

Dual hood assembly with gray smoked hoods. Over-sized hood opening allows customers easy access in and out.

Cord valet provides convenient storage of power cord when not in use or during movement.

Telescoping pole assembly for adjustments to various seated and client heights.

Heavy-duty roller caster base is designed to provide a stable footprint and allow the dryer to be pulled up close to backs of salon seating.

SPECIFICATION

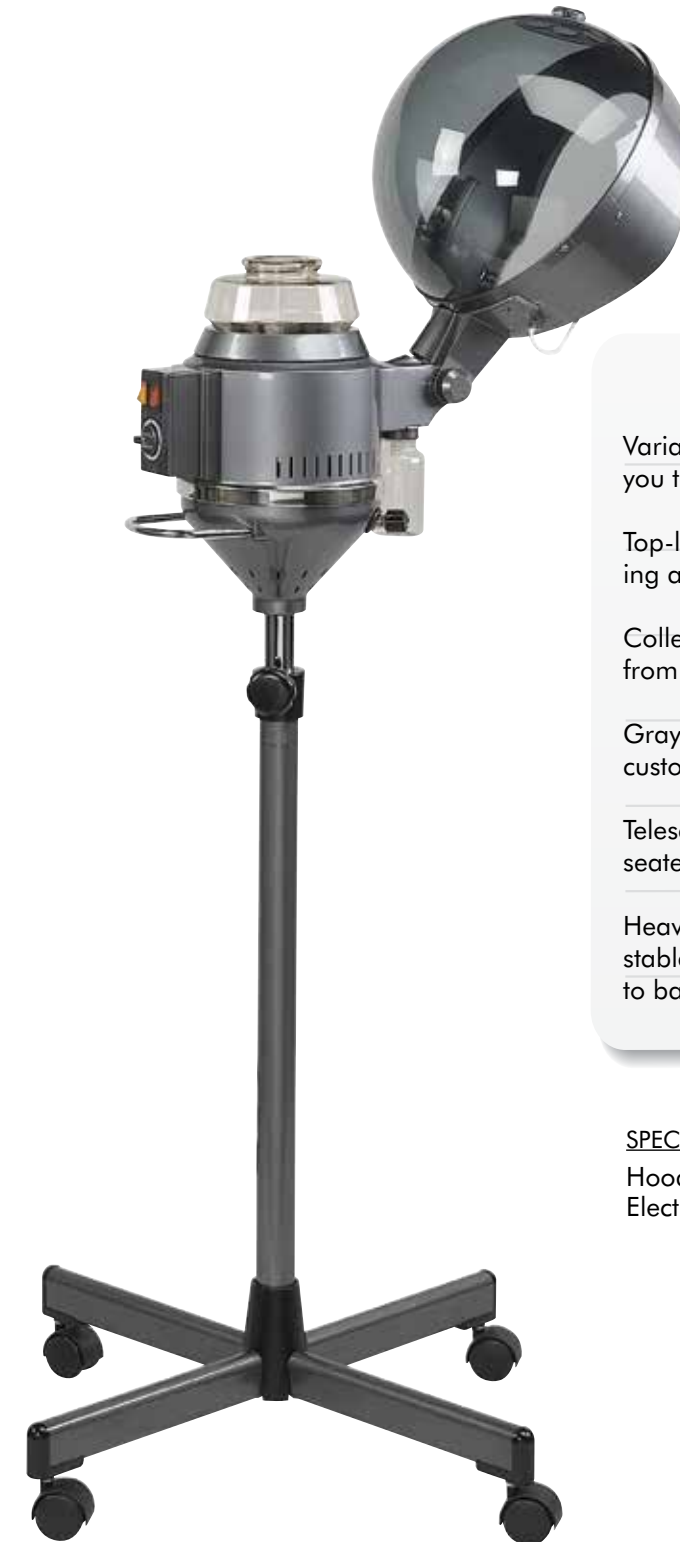
Hood ID: 12³/₄"

Electrical: 120V, 1000W, 8.33A

ECLIPSE

STEAM PROCESSOR
MODEL No. 750

Often imitated, the Eclipse steam processor has been the go-to unit for salon professionals and color specialists. Available on floor stand with casters or wall-mounted.



Variable time and low/high temperature settings allow you to easily and quickly select and change settings.

Top-load reservoir tank and drain function make cleaning and maintenance a breeze.

Collection tank captures and prevents excess moisture from dripping on customers' shoulders and on floors.

Gray smoked hoods with articulating neck allows customers easy access in and out.

Telescoping pole assembly for adjustments to varying seated customer heights.

Heavy-duty roller caster base is designed to provide a stable footprint and allow the dryer to be pulled up close to backs of salon seating.

SPECIFICATION

Hood ID: 10"

Electrical: 120V, 650W, 5.5A

ECLIPSE II

STEAM PROCESSOR
MODEL No. 80ES

Not to be outdone, the Eclipse II steam processor is the second generation of our most popular hair processor with more precise control over temperature. Available on floor stand with casters or wall-mounted.



Variable time and temperature settings allow you to easily and quickly select and change settings.

Top-load reservoir tank and drain function make cleaning and maintenance a breeze.

Integrated collection tank captures and prevents excess moisture from dripping on customers' shoulders and on floors.

Gray smoked hoods with articulating neck allows customers easy access in and out.

Telescoping pole assembly for adjustments to varying seated customer heights.

Heavy-duty roller caster base is designed to provide a stable footprint and allow the dryer to be pulled up close to backs of salon seating.

SPECIFICATION

Hood ID: 10"

Electrical: 120V, 620W, 5.7A

LUMASHINE

ADVANCED PROCESSOR
MODEL No. E3000

If you're still processing color using a traditional dryer, it's time to take a look at the **LUMASHINE ADVANCED INFRARED PROCESSOR**. This processor combines the best features of the traditional dryer with far-infrared technology to perform as one of the best integrated advanced processors available. Available on floor stand with casters or wall-mounted.



Easy to operate yet highly versatile, Lumashine features straightforward time, temperature, fan, and infrared controls to cater to individual client conditions.

The large, dual-hood system protects the client's hair from the fan and infrared emitters and forces air downward. Thus, the system reduces upward recirculation air draft and minimizes the need for hair nets.

Gray smoked hoods with articulating neck accommodates for various processes and allows customers easy access in and out.

Telescoping pole assembly for adjustments to varying seated customer heights.

Heavy-duty roller caster base is designed to provide a stable footprint and allow the dryer to be pulled up close to backs of salon seating.

SPECIFICATION

Hood ID: 11.5"

Electrical: 120V, 1000W, 8.33A

BRAVURA

ADVANCED PROCESSOR
MODEL No. E4000

The **BRAVURA** advanced processor embodies the newest technology, harnessing the power of quartz infrared. Easy to control dials make operation a cinch. Five independently controlled heat zones allow the operator to isolate application area(s). Available on floor stand with casters only.



Easy to operate yet highly versatile, Bravura features straightforward time, temperature, and infrared controls to cater to individual client conditions.

Independently controlled heat zone allows precise application of infrared heat to accelerate color processes. Operator may choose to have all heat zones on or focus on particular area. Especially useful in root touchups.

Large opening allows easy access in and out while accommodating foils, rollers, and rods.

Telescoping pole assembly for adjustments to varying seated customer heights.

Heavy-duty roller caster base is designed to provide a stable footprint and allow the dryer to be pulled to backs of salon seating.

SPECIFICATION

Hood ID: 17"

Electrical: 120V, 900W, 7.5A



SUPERAIRE

ADVANCED DRYER
MODEL No E5000

The **SUPERAIRE** is the most sophisticated professional salon dryer on the market, with the largest hood in the industry to accommodate for foils, rollers, and rods. Independently control time, temperature, and fan speed. Available on floor stand with casters only.



Variable time, temperature, and fan speed settings allow you to easily and quickly select and change settings.

Dual hood assembly. Industry largest hood accommodates foils, rollers, and rods.

Articulating hood angle pivots dryer head forward and back, allowing customers easy access in and out.

Telescoping pole assembly for adjustments to varying seated customer heights.

Heavy-duty roller caster base is designed to provide a stable footprint and allow the dryer to be pulled to backs of salon seating.

SPECIFICATION

Hood ID: 15.75"

Electrical: 120V, 900W, 7.5A

STOOLS

PNEUMATIC TASK SEATING



B46

TASK STOOL

- 15" Round Seat
- Heavy-Duty Nylon, 5-Star Base
- Adjustable Seat Height: 18"-23"

UPHOLSTERY OPTIONS

- + Black, White, or Beige Upholstery
- + Custom-Color Upholstery
- + Customer Own Material Upholstery | 1 Yards

B48

TASK STOOL

- 15" Round Seat
- Foot Ring
- Heavy-Duty Nylon, 5-Star Base
- Standard Seat Height: 18"-23"

UPHOLSTERY OPTIONS

- + Black, White, or Beige Upholstery
- + Custom-Color Upholstery
- + Customer Own Material Upholstery | 1 Yards

B22

ERGONOMIC SADDLE STOOL

- Black Upholstery – Default
- Heavy-Duty Nylon, 5-Star Base
- Adjustable Seat Heights: 22"-23"

OPTIONS

- + Extra-High 30" Gas-lift Available
- + Metal Foot Ring

B24

TECHNICIAN STOOL

- Black Upholstery – Default
- Heavy-Duty Nylon, 5-Star Base
- Adjustable Seat Height: 20"-26"

UPHOLSTERY OPTIONS

- + Black Upholstery
- + Custom-Color Upholstery
- + Customer Own Material Upholstery | 1 Yards

OPTIONS

- + Extra-High 30" Gas-lift Available
- + Metal Foot Ring

CHILD'S PLAY

GARFIELD IS PROUD TO PRESENT OUR UPDATED PORTFOLIO OF CHILDREN SEATING MADE JUST FOR YOUR LITTEST CLIENTS



ELDO

MODEL No. CH15

- Recommended for children age 3-5 years
- Safety restraint lap belt
- Heirloom quality all-steel construction
- Enamel paint with chromed detailing

ALTERNATE VIEW



LUCY

CHILDREN'S CUTTING CHAIR

MODEL No. CH09

- Recommended for children age 3-5 years
- Large kick flap
- Safety restraint lap belt
- Colorful steering wheel keeps children occupied and facing forward



CHARLIE

BOOSTER SEAT

MODEL No. CH03

- Recommended for children age 3-5 years
 - Generous cushion
 - Large kick flap
 - Easy to clean and store
- *Styling chair not included.*

M.HARDING

METAL-LOCKING CARTS
MODEL No. HT02



- Modern design with clean lines
- Chemical resistant, expandable work top
- Fully encased door, lockable door
- Extra wide storage trays with optional dividers
- Includes storage accessories:
 - Wire Product Shelf
 - Spiral blow dryer holder
 - Appliance hanging bar
 - Color bowls
 - Large ball-bearing wheels



ADVICE FROM TOP PROFESSIONALS

Why replace rollabouts every year?! You know what I'm talking about: the rollabout door breaks, the trays fall, the plastic wheels fall off, and the frame bows in. **BREAK THE CYCLE!** It's time to take a look at metal rollabouts. Consider our series of metal rollabouts!

LOCK & LOAD

UPDATED LINE OF SALON ROLLABOUTS



PORTER

METAL LOCKING ROLLABOUT
MODEL No. HT01



DEGRAIS

METAL LOCKING ROLLABOUT
MODEL No. HT03



VEDGE

LOCKING ROLLABOUT
MODEL No. HT12

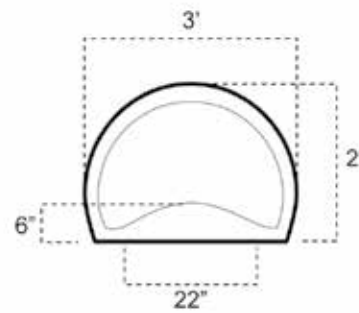
MODEL	DESCRIPTION	EXTERIOR DIMENSIONS
HT01	Metal, Black Powder Coat Finish Plastic Trays × 5 XL Rollercoaster Wheels Metal Lockable Door	11.25"W × 14"D × 33.5"-40"H
HT02	Metal, Black Powder Coat Finish Plastic Trays × 5 XL Rollercoaster Wheels Metal Lockable Door	14"W × 15.5"D × 36"H
HT03	Metal, Black Powder Coat Finish Plastic Trays × 5 Rollercoaster Wheels Rollup Lockable Door	12.5"W × 15.25"D × 35.25"H
HT12	Plastic, High Gloss Finish Plastic Trays × 6 Standard Wheels Metal Lockable Doors	15.25"W × 15.25"D × 37"H

SALONSTEP

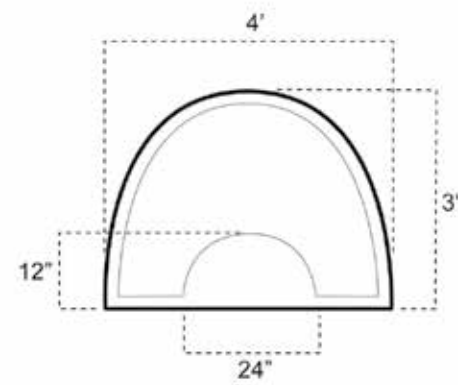
ANTI-FATIGUE MATS

Reduce strain and fatigue on feet, ankles, legs, and back. Closed-cell sponge base provides continuous support. Engineered surface resists punctures. Fully beveled edges. Fits most standard hydraulic bases. Lightweight, durable, and easy to clean.

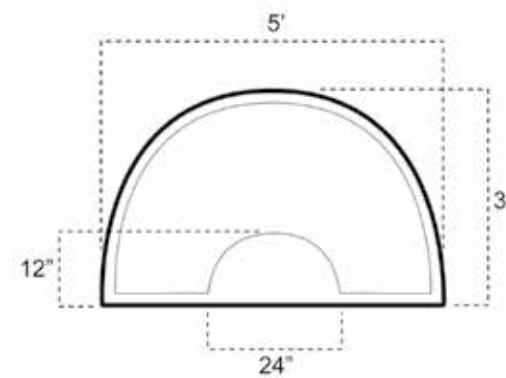
CM05



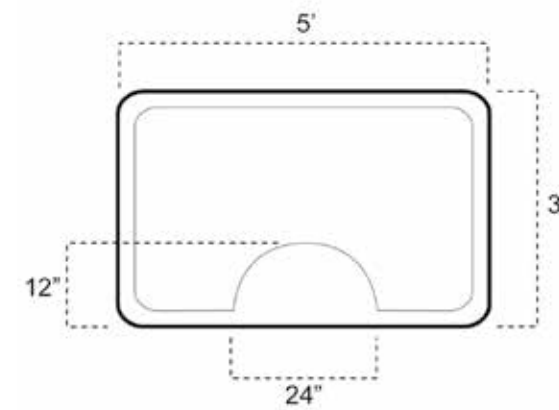
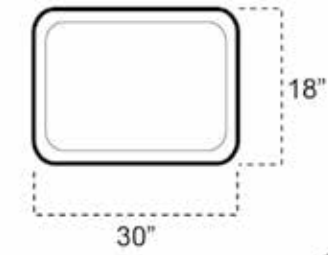
CM01



CM02



CM04



CM03



INITIATIVES FOR LIFE

PARAGON'S COMPREHENSIVE APPROACH TO ENVIRONMENTAL RESPONSIBILITY

It is in our nature at Paragon to think smarter. Not just about furniture and equipment design. It's about everything that we do that affects our distributors, consumers, and environment around us. We don't pretend to have all the answers, but we do have a responsibility to do things differently and better – locally and globally. And always. Because taking care of our planet, and each other, is a task that we must never give up on. For Life.

We are the largest American spa-equipment manufacturer, and as the industry leader, we are proud to shoulder our responsibility of being stewards of the environment. In line with national Leadership in Energy and Environmental Design (LEED) initiatives and as part of our corporate culture, Paragon is consciously finding the ways to reduce the impact on the environment while increasing efficiency in our everyday actions. Here's a sample of the initiatives we have already set into motion.

LONGER-LASTING PRODUCTS

Paragon designs & manufactures products that last. We do not cut corners to save cost, and our Factory Service Center (FSC) technicians are here to repair, support, and prolong the life of all Paragon products. This saves our consumers money that they might otherwise have to spend on new equipment and produces less waste.

RESPONSIBLE RECYCLING

More American spas purchase Paragon equipment than any other brand... bar none. Once a product reaches the end of its useful life, we partner with our local and community e-waste recyclers to recycle the products in environmentally responsible ways.

e-CATALOGS and e-PRICEBOOKS

In any given year, over 50,000 copies of our catalog are distributed to consumers. Since 2010, Paragon has made high-resolution, electronic copies (PDF format) of our current product catalogs and pricebooks available for email distribution. Emailing product literature will enable all of us to save trees and minimize transport and CO2 pollution.

e-PROCUREMENT and e-INVOICING

We cannot ignore the number of paper purchase orders, invoices, and envelopes generated each year. We request our vendors and customers to help us reduce over 50,000 copies of printed purchase orders, order confirmations, statements, invoices, and marketing material. To send purchase orders and receive invoices, all that is needed is a computer with internet connectivity and an email program.

GOOD TO KNOW

PRODUCT FACTS

Use the catalog for inspiration. Please refer to each model number for the availability of specific types of veneer and upholstery colors in the 2014 Product Portfolio Pricebook. For more information, check out www.garfieldint.com.

PRICES

You will not find prices in this catalog because all furniture and electronic pieces are sold through a nationwide network of reputable, professional distributors. We do have a 2014 Manufacturer Suggested Retail Price (MSRP) in USD that serves as a general guideline for product pricing. MSRP will be effective from March 2014 until further notice.

SHOWROOMS

You are always welcome to visit our network of showrooms located in various regions across the country. Just give us a call, and we can point you to the nearest showroom center that may have the product you're looking for.

ASSISTANCE

Our Factory Service Center (FSC) is here to help you better understand, select, and get support for our products. We are the best at what we do, and we are here to help service our products and prolong the work-life. If you have a question, concern, or suggestion, please don't hesitate to give a quick call at 1-888-731-6688, Monday-Friday, 9am-5pm Pacific Time (PT).

QUALITY

Furniture production is part of our heritage. Our 50-plus years of experience and know-how provide invaluable benefits for our production facilities in Southern California as well as in our close cooperation with our global suppliers. We have chosen to work with only a select few suppliers that share our commitment to high quality. This way we are in control of the entire production process, ensuring the highest quality every step of the way.

We believe that good quality is not achieved randomly, but through consistent and dedicated work. A comprehensive quality-control program blending industry standards and our own production experience have been implemented with all our suppliers. Our factory-trained technicians take all necessary steps to ensure that our detailed guidelines are followed and that final products are checked before leaving our production facility.

All our furnishings are made from high-quality components and raw-materials with a passionate regard for functional and affordable design. To achieve this, we work on finding the right balance of carefully selected materials, beautiful design, and deliberate simplicity.

UPHOLSTERED FURNITURE

We carefully select our upholstery fabric based on the design and function of the individual products they are to be used for. We guarantee no color difference between different pieces of furniture when commissioned as one order. Our only requirement is that all the pieces of furniture are ordered at the same time.

We are dedicated to ensuring that every single piece of our upholstery provides you with perfect seating comfort. That is why we primarily use high resilient foam in our seat and back cushions. High resilient foam is very structurally stable, ensuring optimum comfort and continuous support.

WOOD FURNITURE

You will find veneer surfaces on most of our board furniture, such as cabinets, nail tables, treatment tables. Veneer is just like wood—a natural material—and variations in the grain must be expected. This is what makes each piece of wood furniture unique. The majority of our wooden parts are lacquered 3-4 times to ensure a very durable surface and finish.

METAL COMPONENTS

The majority of our metal parts are made from the highest quality metal, keeping any impurities to the lowest level. Our chromed metal parts are treated with a thick layer of nickel underneath the chrome. It leaves a very smooth surface with minimum risk of rust. Other metal parts are powder-coated. This produces a tougher surface than when using conventional paint.



TERMS & CONDITIONS

These terms and conditions apply to all transactions.

PLACING ORDERS

When placing orders, please supply all necessary information including PO numbers, bill to/ship to addresses, required ship dates, and special instructions. Before submitting an order, please review the model number(s), leg rest(s), chair base selection(s), quantity, and color. When ordering dryer chairs, please indicate the dryer's make and model.

PRICES AND TERMS OF PAYMENT

Prices are subject to change without notice. All shipments will be billed at prices in effect upon receipt of order. All prices adhere to the manufacturer's suggested list prices and are FOB origin. Standard payment terms are net 30 days with credit approval. Prior to credit approval terms are PREPAY/ CREDIT CARD ONLY. A finance charge of 1.5% per month (18% per annum) will be charged on all Past Due Accounts. A minimum charge of \$5.00 is applicable for all orders requiring shipping and handling. Additional fees may apply for special shipping instructions

SHIPMENTS

The carrier, in good condition, accepts all shipments. All goods are sold FOB shipping point. Our responsibility ceases when the product is delivered to the transportation company. All shipments are carefully packed, but we do not guarantee safe delivery, and claims for damage or shortage of goods should be made to the carrier. Upon delivery, shipments should be inspected and all damages and/or shortages noted on the bill of lading or delivery receipt. All claims for allowances or shortages of any kind are waived unless made by the buyer in writing within 5 working days after receipt of goods. If concealed damage is discovered, contact delivering carrier within 7 working days. You will need an inspection report to support your claim. Failure to adequately describe such damage, shortage, or loss may hinder the claims process.

Distributor has 7 days from receipt to report any order that was short-shipped or incorrectly shipped. After 7 days, Garfield assumes no responsibility in shipment. Reports must be made to customer service at 1-888-731-6688.

Distributors and/or customers have 48-hours from receipt of shipment to report any defective/damaged product or equipment. Product must be unopened and unused. Product must be returned in original packaging or similar quality packaging. Reports must be made to customer service at 1-888-731-6688. A customer service representative will provide distributor with a return merchandise authorization (R.M.A.) number, which is required for any return to be accepted. Once an R.M.A. is assigned, distributor and/or customer has 10 days to return the product or equipment.

Distributor has 30 days from ship date to report any purchases that were purchased in error. Product/equipment must be unopened and unused. A 20% restocking fee will be charged on all returns. Product must be shipped back in original packaging or similar quality packaging. Distributor is responsible for all shipping charges. Return requests must be made to customer service at 1-888-731-6688. Customer service will provide distributor with a return merchandise authorization (R.M.A.) number, which is required for any return to be accepted. Once the R.M.A. is assigned, distributor has 10 days to return the product or equipment. Custom/special orders are not eligible for return.

CUSTOMER'S OWN MATERIAL (C.O.M.)

Customers may choose to provide their own material. Due to the extra handling involved, no discounts or allowances will be issued for the use of C.O.M. C.O.M. should be shipped PREPAID to the La Mirada location and must be clearly labeled with the customer's name, purchase order number, and the chairs for which material is intended. Production cannot be scheduled until the COM is received.

FABRIC YARDAGE INFORMATION

Arms: 1 Yard(s)
Dryer Chairs: 4 Yard(s)
Hydraulic and Swivel Chairs: 2 Yard(s)
Shampoo Chairs: 2 Yard(s)
Stools and Head-Rest: 1 Yard(s)
Facial Chairs: 4 Yard(s)
Stools with Backs: 1 Yard(s)

RETURNS / EXCHANGES

No merchandise is to be returned without GARFIELD'S specific consent. We do not accept returns/exchanges beyond 30 days of the original invoice date. Please call for a return merchandise authorization (R.M.A.) and shipping instructions. Retain a record of your R.M.A. number for possible inquiries. The shipper will be responsible for damages sustained during shipment. Products damaged through neglect due to improper packaging or in shipment will void the warranty and be returned to you non-repaired, unacceptable for return or exchange.

A 20% restocking fee will apply to all stock items unused and approved for return. Special/custom order products are nonrefundable. All items returned for credit must pass inspection to qualify for refund. Please note: many furniture pieces are special order items and not subject for return or exchange.

CALL TAGS

Call tags will only be issued within 30 days of date on original invoice. A credit card will be required with all call tag requests. A reshipment will be made in a timely manner if necessary. If said damage/defective item is not returned within 10 days after the call tag is issued, the requestor becomes responsible for all charges related to the reshipment including shipping, call-tag fees, and the value of replacement merchandise. There will be no returns or exchanges on special/custom order products.

CHANGES AND CANCELLATION

Once the order is received, there is a 24-hour cancellation period. Changes and cancellations will be subject to charges based upon the degree of completion of the manufactured products. Special/custom order products are not subject to cancellation. Special instructions including but not limited to C.O.M., powder coating, and metal brass plating are not subject to cancellation.

ATTORNEY FEES

Should collection procedures become necessary to collect any amount due, GARFIELD shall be entitled to its actual cost and expenses incurred, including reasonable attorney fees. Both parties agree that should litigation be instituted to collect any such amount, the venue of such action shall be in the City of La Mirada, County of Los Angeles, State of California. This agreement, subsequent contracts, purchase orders, and invoices shall be construed in accordance with the Laws of California.

NSF (NON SUFFICIENT FUNDS) CHECKS

Stop Payment and NSF checks are subject to a \$25.00 fee.

LIMITED WARRANTIES

Claims should be made through the authorized distributor from whom the equipment was purchased. GARFIELD'S warranty obligations for products are limited to the terms set forth below:

This warranty extends to the first end-user purchaser and is not transferable. Warranty valid only in the United States of America. GARFIELD warrants this product against defects in material or workmanship for a period of one (1) year from the date of original sale except the following:

- Spa equipment carrying a limited warranty of:
 - 3 years for the Signature Series, 101, P1, 7000, 160, 166
- Hydraulic pumps carrying a limited warranty of:
 - 5 years for model nos. HB00, HB09, HB17
 - All hydraulics less than five years will be repaired/replaced
- Reclining mechanisms carrying a limited warranty of:
 - 2 years for model nos. 1520, 1960, 1970
- Dryer motors, heating elements, thermostats, hoods, timers and other components are warranted for one year unless failure is caused by negligence or not changing the filter every 4-6 months.

If a defect arises and a valid claim is received by GARFIELD within the warranty period, at its option, GARFIELD will (A) repair the product at no charge, using new or refurbished replacement parts, (B) exchange the product with a product that is new or that has been manufactured from new or serviceable used parts and is at least functionally equivalent to the original product, or (C) refund the purchase price of the product.

EXCLUSIONS & LIMITATIONS This warranty does not apply to: (A) regular cleanings; (B) To glass jars/parts, hoses, neckrests, rubber parts, accessories, attachments, bulbs, fuses; parts otherwise deemed by the manufacturer as "wear-and-tear" items; detachable parts and/or accessories; (C) damage caused by accident, abuse, misuse, misapplication, or non-Garfield products; (D) damage caused by service performed by anyone other than authorized GARFIELD technicians; (E) a product or a part that has been modified without the written permission of GARFIELD so as to change its intended use; (F) units with GARFIELD serial number(s) removed or defaced. This warranty does not extend to variations in color, grain, or texture allowed by commercial standards. This warranty does not cover damage incurred by user environment and care including but not limited to fading, staining, soiling, crushing, and general wear. **This warranty does not include shipping costs.** In order to obtain warranty service, the product must be delivered to and picked up from the manufacturer at the user's expense.

OBTAINING WARRANTY SERVICE

Before delivering the product for warranty service it is the owner's responsibility to (A) obtain a return merchandise authorization (R.M.A.) number. Please have your serial number ready, and (B) securely pack the items/units. Items damaged during shipping for repair will not be covered by this warranty.

OWNER'S RESPONSIBILITY

The purchaser is responsible for:

- Determining the suitability of the merchandise(s) and its intended use.
- Performing routine safety inspections—*inspecting merchandise and testing critical safety features before each day's use. If merchandise is in need of repair, return the equipment for inspection and repair. Please call in for a return merchandise authorization (R.M.A.) number.*
- Ensuring that all users and/or employees receive proper training before allowing them to operate equipment.

PHOTOGRAPHIC DOCUMENTATION will be requested at the time warranty claim or servicing is initiated. Customer is responsible for submitting a minimum of three (3) clear digital photographs of product defect/damage.

PRODUCT DESCRIPTIONS

Brochure descriptions, website information, and samples on display are indicative only and any specifications, weights, measurements, and technical data have been prepared by manufacturers are for guidance only. Buyers are therefore required to check current specification, colors, weights, and measurements, prior to order, as manufacturers may alter specifications to improve products. Manufacturers also reserve the right to amend specifications, without notice, in order to improve products or where amendment becomes necessary.

						
Snow White IND-8413	Super White IND-8407	Quail IND-8630	French Brown IND-8617	Taupe IND-8584		
						
Adobe IND-8501	Parchment IND-8628	Camel IND-8606	Moonstone IND-8420	Sand IND-8634	Light Maple IND-8624	Chocolate IND-8607
						
Summer Haze IND-8636	Cornsilk IND-8611	Lemon Peel IND-8415	Coffee Cream IND-8414	Tawny IND-8637	Brown Sugar IND-8605	Mocha IND-8406
						
Shell IND-8635	Clay IND-8609	Rosetan IND-8633	Sunflower IND-8421	Dutch Orange IND-8615	Cinnamon IND-8608	Chestnut IND-8516
						
Petal IND-8629	Tea Rose IND-8565	Crescent Cherry IND-8613	Copper IND-8610	Mandarin IND-8625	Tomato IND-8558	Paprika IND-8627
						
Azure Blue IND-8604	Regal IND-8632	Royal Blue IND-8542	Raspberry IND-8631	American Beauty IND-8528	Lipstick IND-8527	Bordeaux IND-8532
						
Aero Blue IND-8602	Cosmos IND-8612	Space Blue IND-8541	Deep Phoenician IND-8576	Grape IND-8404	Dark Plum IND-8614	Burgundy IND-8569
						
China Green IND-8417	Turquoise IND-8411	Celedon Green IND-8550	Colonial Blue IND-8403	Midnight Blue IND-8419	Academy Blue IND-8601	Navy IND-8626
						
LT. Lime IND-8623	Greenery IND-8618	Leaf Green IND-8621	Ocean Gray IND-8545	Spruce IND-8549	Grotto IND-8564	Yew Green IND-8553
						
Alabaster IND-8603	Platinum IND-8408	Dove IND-8567	Franciscan Gray IND-8616	Gunmetal IND-8619	Espresso IND-8405	Black IND-8540



15977 Heron Avenue
La Mirada, CA 90638



info@garfieldint.com

PARAGON[®]



www.garfieldint.com



Toll Free
1-888-731-6688
Fax
714-690-5957